



ASX RELEASE

Infigen Energy

Level 17, 56 Pitt Street, Sydney NSW 2000, Australia
T (02) 8031 9900 F (02) 9247 6086

Infigen Energy Limited ABN 39 105 051 616
Infigen Energy Trust ARSN 116 244 118

www.infigenenergy.com

9 April 2020

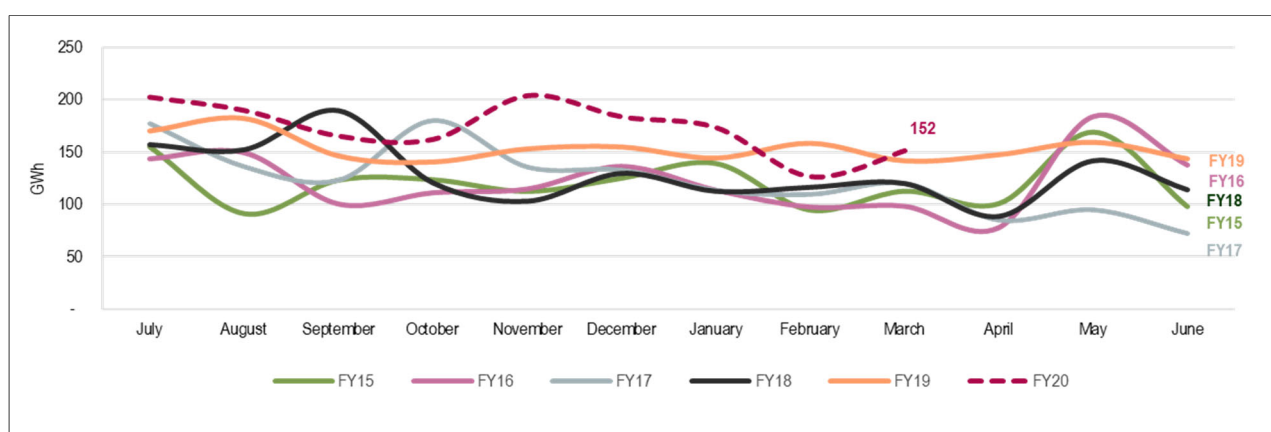
INFIGEN ANNOUNCES MARCH 2020 MONTHLY PRODUCTION

Infigen (ASX: IFN) today reported unaudited production for March 2020 as follows:

Wind Farm ¹	State	March			FYTD		
		2020 (GWh)	2019 (GWh)	Variance (%)	FY20 (GWh)	FY19 (GWh)	Variance (%)
Alinta	WA	24	30	(21)	248	265	(7)
Bodangora	NSW	36	27	31	274	147	n/m
Capital	NSW	23	26	(13)	319	288	11
Lake Bonney 1	SA	12	12	3	134	148	(9)
Lake Bonney 2	SA	26	21	24	273	283	(4)
Lake Bonney 3	SA	6	5	23	75	73	3
Woodlawn	NSW	9	11	(17)	128	116	10
Production Generated from Owned Renewable Energy Assets²		136	132	3	1,451	1,320	10
Production Sold from Owned Renewable Energy Assets ³		132	129	2	1,413	1,277	11
Production purchased and sold from Contracted Assets ⁴		14	9	n/m	94	64	n/m
Renewable Energy Generation sold		146	137	6	1,508	1,342	12

During March 2020, Production Sold from the Smithfield OCGT was 0.4GWh. Smithfield is a gas peaking facility where annual capacity utilisation is expected to be in the range of 2-8%, with significant variations in output expected from month to month.

Monthly Renewable Energy Generation Produced in current and prior Financial Years⁵:



¹ Some totals may not add down the column or across the row (where applicable) due to rounding of individual components. Variance is reported as a percentage and is based on unrounded figures.

² Owned Renewable Energy Assets refers to Infigen's seven owned wind farms.

³ Production Generated is subject to marginal loss factors (MLFs) that are fixed annually by the Australian Energy Market Operator to account for network losses. Production Sold reflects the impact of these MLFs.

⁴ Contracted Assets refer to production acquired under run of plant PPAs where Infigen is the offtaker. Production from Contracted Assets commenced with Kiata Wind Farm in September 2018 and includes Toora Wind Farm from January 2020.

⁵ Monthly Production Generated from Owned Renewable Energy Assets and Contracted Assets. Production from the Bodangora Wind Farm commenced in August 2018. Production from Contracted Assets commenced in September 2018.



Further details in relation to Production Generated is reported in Appendix 1. Further details in relation to Production Sold is reported in Appendix 2.

ENDS

This announcement was authorised by: Managing Director and Chief Executive Officer, Ross Rolfe AO.

For further information please contact:

Peter Campbell
General Manager, Investor Relations
Peter.Campbell@infigenenergy.com
+61 2 8031 9970

About Infigen

Infigen is leading Australia's transition to a clean energy future. Infigen generates and sources renewable energy, increases the value of intermittent renewables by firming, and provides customers with clean, reliable and competitively priced energy solutions.

Infigen generates renewable energy from its owned wind farms in New South Wales (NSW), South Australia (SA) and Western Australia (WA). Infigen also sources renewable energy from third party renewable projects under its 'Capital Lite' strategy. Infigen's strategy is to increase the value of intermittent renewables by firming them from its Smithfield OCGT Facility in Western Sydney, NSW, its 25 MW/52 MWh battery at Lake Bonney, SA, and the South Australian Gas Turbines from the commencement of the lease of those assets.

Infigen's energy retailing licences are held in the National Electricity Market (NEM) regions of Queensland, New South Wales (including the Australian Capital Territory), Victoria and South Australia.

Infigen is a proud and active supporter of the communities in which it operates.

For further information, please visit: www.infigenenergy.com



Appendix 1

Monthly Renewable Energy Generation Produced (GWh) in current and prior Financial Years

Wind Farm	Alinta	Bodangora	Capital	Lake Bonney 1	Lake Bonney 2	Lake Bonney 3	Woodlawn	Contracted Assets	Total
FY20⁶									
July	22	30	41	23	45	12	18	12	203
August	27	26	42	19	38	11	17	11	190
September	23	30	37	14	28	8	15	10	166
October	30	29	29	14	29	9	12	10	162
November	37	30	43	18	36	11	17	13	204
December	28	29	40	17	34	9	16	11	184
January	36	31	32	14	28	7	12	14	174
February	21	33	33	4	8	2	12	14	127
March	24	36	23	12	26	6	9	16	152
April									
May									
June									
Total	248	274	319	134	273	75	128	111	1,562
FY19⁶									
July	19	-	46	28	46	12	19	-	170
August	25	1	47	27	50	13	19	-	182
September	24	6	30	17	36	10	12	11	146
October	26	9	30	14	30	8	12	12	140
November	34	18	35	13	24	6	13	10	153
December	38	25	25	13	26	7	10	10	155
January	39	27	23	10	20	5	10	9	144
February	30	33	25	14	29	8	10	9	158
March	30	27	26	12	21	5	11	9	142
April	24	31	20	15	32	9	8	9	147
May	31	22	32	21	23	6	14	11	159
June	23	24	20	16	33	9	9	10	143
Total	342	224	359	200	371	97	147	101	1,841

⁶ Some totals may not add down the column or across the row (where applicable) due to rounding of individual components.



Appendix 2

Monthly Renewable Energy Generation Sold (GWh) in current and prior Financial Years

Wind Farm	Alinta	Bodangora	Capital	Lake Bonney 1	Lake Bonney 2	Lake Bonney 3	Woodlawn	Contracted Assets	Total
FY20⁷									
July	22	29	40	22	44	12	17	10	196
August	27	25	41	18	37	11	16	9	184
September	23	28	36	14	27	8	15	8	160
October	30	27	28	14	29	9	11	9	157
November	37	28	42	17	35	10	17	11	197
December	28	28	39	17	34	8	15	9	178
January	36	29	31	13	28	7	12	12	168
February	21	31	32	4	8	2	12	12	122
March	24	34	22	12	25	6	9	14	146
April									
May									
June									
Total	248	260	310	131	267	74	124	94	1,508
FY19⁷									
July	19	-	46	25	42	11	20	-	163
August	25	-	48	25	46	12	19	-	175
September	24	6	30	16	33	9	12	10	140
October	26	9	30	13	27	7	12	11	135
November	34	18	35	12	22	6	13	9	148
December	38	24	26	12	24	6	10	9	150
January	39	27	24	9	19	5	10	8	140
February	30	33	25	13	27	7	10	8	153
March	30	27	27	11	19	5	12	9	137
April	24	30	20	14	29	8	8	8	142
May	31	22	32	19	21	5	14	10	154
June	23	24	20	15	30	8	9	9	137
Total	342	220	364	184	339	90	149	92	1,775

⁷ Some totals may not add down the column or across the row (where applicable) due to rounding of individual components.