



Infigen Energy Limited · ABN 39 105 051 616  
Infigen Energy Trust · ARSN 116 244 118  
Infigen Energy (Bermuda) Limited · ARBN 116 360 715  
Infigen Energy · Level 22 · 56 Pitt Street · Sydney NSW 2000 · Australia  
T +61 2 8031 9900 · F +61 2 9247 6086 · [www.infigenenergy.com](http://www.infigenenergy.com)

# ASX Release

28 June 2010

## **INFIGEN ISSUES NOTICE TO PROCEED FOR WOODLAWN WIND FARM**

Infigen Energy (ASX: IFN) announces today that it has issued a notice to proceed for the construction of the 42 MW Woodlawn wind farm located near Bungendore in New South Wales and adjacent to IFN's operational Capital wind farm.

The Woodlawn wind farm is expected to be completed in the second half of 2011 and will comprise 20 Suzlon S88 2.1 MW turbines acquired by IFN late last year. Suzlon Energy will also be the turnkey engineering, procurement and construction (EPC) provider on the project. Total EPC costs are expected to be approximately \$100 million.

The economics of the Woodlawn wind farm are underpinned by a high quality wind resource, attractive turbine pricing, and an efficient connection to be achieved via the existing 330/33 KV sub-station at the Capital wind farm. Once completed Infigen will own and operate 87 x S88 turbines (182.7 MW) in the same location providing scope for additional operational efficiencies.

Infigen is currently in discussion with parties regarding sales arrangements for the outputs of the wind farm. The additional capacity will be integrated into IFN's merchant energy portfolio which contracts directly with electricity retailers and major industrial consumers of electricity and wholesale energy market participants. IFN holds a NSW retail electricity suppliers licence.

Infigen Energy Managing Director, Miles George said, "The Infigen team has a strong track record in developing, owning and operating wind farms in Australia. The commencement of our sixth wind farm in Australia represents an important milestone in the delivery of our FY11 construction program."

"Recent enhancements to Australia's renewable energy target legislation have boosted confidence in the large scale renewable energy industry, and provided further certainty for investment in regional Australia. We are committed to continuing the growth of our Australian business through the staged execution of our development pipeline to provide attractive returns for our securityholders," Mr George added.

A fact sheet for the Woodlawn wind farm is provided as an attachment to this announcement.

**ENDS**



**For further information please contact:**

**Rosalie Duff**

Head of Investor Relations & Media

+61 2 8031 9901

+61 (0) 421 611 932

**About Infigen Energy:**

Infigen Energy is Australia's leading specialist renewable energy business. Infigen Energy has five wind farms in Australia with a total capacity of 508 MW and plans to significantly expand its renewable energy business through the delivery of projects from its Australian development pipeline. Infigen also owns and operates US and German wind energy businesses taking its aggregate wind energy business interests to 35 wind farms with a total capacity of 2,194 MW.

Infigen's US business comprises 18 wind farms with a total installed capacity of 1089 MW and also includes the Bluarc asset management business. It is the largest independent portfolio of wind energy generating assets in the US.

Infigen's presence in Germany comprises 12 wind farms with a total installed capacity of 128.7 MW.

Infigen is listed on the Australian Securities Exchange and has a market capitalisation of approximately A\$0.7 billion.

For further information please visit our website: [www.infigenenergy.com](http://www.infigenenergy.com)

**About Suzlon Energy Limited:**

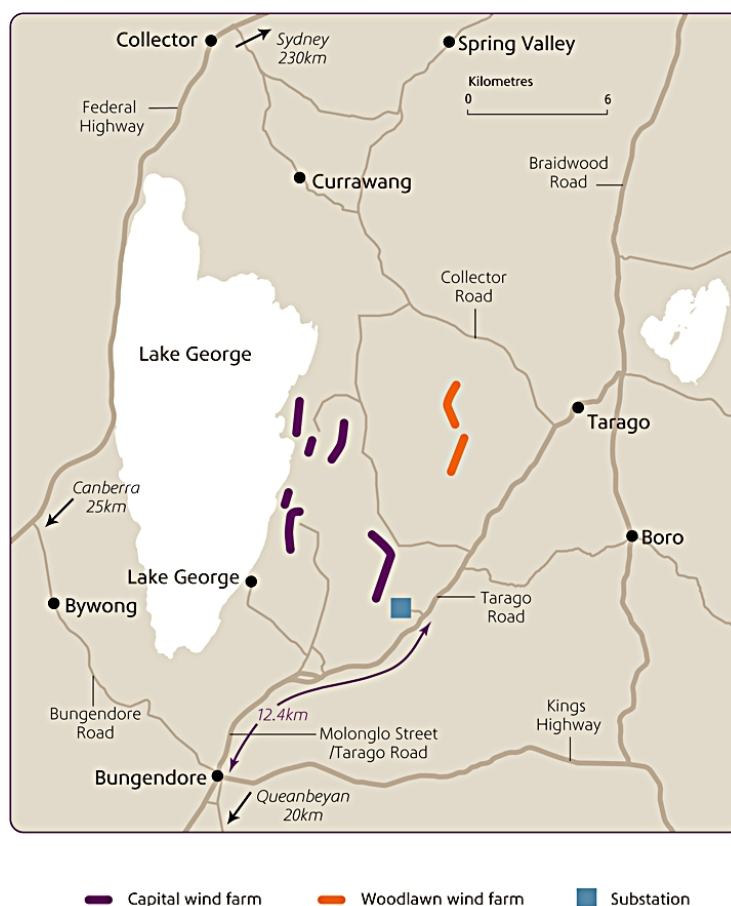
Suzlon is ranked as the world's third largest wind turbine supplier in terms of global market share in 2009. Suzlon has its corporate office in Pune, India. The company's global spread reflects in its project and market portfolio, extending across Asia, Australia, Europe and North and South America.

Suzlon Energy Australia is a leading provider of utility scale, grid connected wind farms with current contracts in Australia to supply 360 Suzlon S88 2.1 MW wind turbines delivering over 750 MW of renewable energy.

## WOODLAWN WIND FARM

The Woodlawn wind farm will have a total installed capacity of 42 MW comprising 20 Suzlon S88 wind turbines. The Woodlawn wind farm is located near Bungendore in New South Wales, Australia.

(Diagram illustrative only)



## KEY INFORMATION

<b>Operation</b>	Operated by Infigen. Services and maintenance agreement with Suzlon Energy Australia for five years
<b>Land</b>	30 year land leases with additional five year option to extend
<b>Infigen's ownership</b>	100%
<b>Regulatory regime</b>	Large-scale Renewable Energy Target (LRET)