

Appendix D Paddock Trees

Species	Above Benchmark	Hollows Present	Class	Credit Value	DBH	Scat Tree	PCT	Easting	Northing
Yellow Box	Yes	No	3	0.75	75	Scattered Tree 1	277	689964	6290186
Yellow Box	Yes	No	3	0.75	90	Scattered Tree 2	277	689992	6290215
Yellow Box	Yes	Yes	3	1	110	Scattered Tree 3	277	690055	6290049
Yellow Box	Yes	No	3	0.75	130	Scattered Tree 4	277	690052	6290146
Yellow Box	Yes	No	3	0.75	130	Scattered Tree 5	277	690064	6289976
Yellow Box	Yes	No	3	0.75	100	Scattered Tree 6	277	690077	6289974
Yellow Box	Yes	No	3	0.75	200	Scattered Tree 7	277	690127	6290021
Yellow Box	Yes	No	3	0.75	130	Scattered Tree 8	277	690141	6289996
Yellow Box	Yes	No	3	0.75	90	Scattered Tree 9	277	690202	6289787
Yellow Box	Yes	Yes	3	1	100	Scattered Tree 10	277	690512	6289410
White Box	Yes	No	3	0.75	72	Scattered Tree 11	277	690479	6289284
Long leaved box	Yes	Yes	3	1	120	Scattered Tree 12	277	691881	6289246
Broadleaved Peppermint	Yes	No	3	0.75	51	Scattered Tree 13	277	690151	6289272
White Box	No	No	2	0.5	25	Scattered Tree 14	277	690127	6289256
Blakelys Red Gum	No	No	2	0.5	47	Scattered Tree 15	277	690045	6289222
Yellow Box	Yes	Yes	3	1	120	Scattered Tree 16	277	692612	6281109

Yellow Box	Yes	Yes	3	1	130	Scattered Tree 17	277	692605	6281174
Yellow Box	Yes	Yes	3	1	97	Scattered Tree 18	277	692477	6281265
Yellow Box	Yes	Yes	3	1	90	Scattered Tree 19	277	692422	6281365
Blakelys Red Gum	Yes	Yes	3	1	100	Scattered Tree 20	277	692523	6281306
Blakelys Red Gum	No	No	2	0.5	30	Scattered Tree 21	277	692687	6281144
Blakelys Red Gum	Yes	Yes	3	1	75	Scattered Tree 22	277	692850	6280648
Yellow Box	Yes	No	3	0.75	90	Scattered Tree 23	277	693003	6280146
Apple Box	No	No	2	0.5	40	Scattered Tree 24	277	692907	6280164
Yellow Box	Yes	Yes	3	1	73	Scattered Tree 25	277	691515	6283301
Yellow Box	Yes	Yes	3	1	93	Scattered Tree 26	277	691535	6283315
Yellow Box	Yes	No	3	0.75	110	Scattered Tree 27	266	690379	6283116
Yellow Box	Yes	No	3	0.75	125	Scattered Tree 28	266	690385	6283153
Yellow Box	Yes	No	3	0.75	200	Scattered Tree 29	266	690366	6283152
Red Stringybark	Yes	Yes	3	1	130	Scattered Tree 30	266	690389	6282881
Yellow Box	Yes	Yes	3	1	100	Scattered Tree 31	277	690081	6282612
Yellow Box	Yes	No	3	0.75	65	Scattered Tree 32	266	689819	6282360
Yellow Box	Yes	No	3	0.75	70	Scattered Tree 33	266	689778	6282348
White Box	Yes	Yes	3	1	65	Scattered Tree 34	266	689669	6282258
White Box	Yes	Yes	3	1	85	Scattered Tree 35	266	689596	6282360
White Box	No	Yes	2	0.75	35	Scattered Tree 36	266	689570	6282367

White Box	Yes	Yes	3	1	65	Scattered Tree 37	266	689508	6282401
White Box	Yes	Yes	3	1	78	Scattered Tree 38	266	689518	6282462
White Box	Yes	Yes	3	1	75	Scattered Tree 39	266	689478	6282437
White Box	Yes	No	3	0.75	65	Scattered Tree 40	266	689349	6282427
White Box	Yes	Yes	3	1	100	Scattered Tree 41	266	689332	6282406
White Box	Yes	Yes	3	1	70	Scattered Tree 42	266	690381	6283366
White Box	Yes	Yes	3	1	62	Scattered Tree 43	266	690384	6283321
Long leaved box	Yes	Yes	3	1	80	Scattered Tree 44	277	690676	6283531
Long leaved box	Yes	No	3	0.75	100	Scattered Tree 45	266	690693	6283505
White Box	Yes	Yes	3	1	60	Scattered Tree 46	266	690768	6283561
Blakelys Red Gum	Yes	Yes	3	1	100	Scattered Tree 47	277	690941	6283679
Yellow Box	Yes	No	3	0.75	71	Scattered Tree 48	277	691390	6283554
Blakelys Red Gum	Yes	Yes	3	1	80	Scattered Tree 49	277	692017	6283464
Yellow Box	Yes	Yes	3	1	160	Scattered Tree 50	277	693230	6284590
Yellow Box	No	No	2	0.5	50	Scattered Tree 51	277	693225	6284600
Yellow Box	Yes	No	3	0.75	65	Scattered Tree 52	277	693229	6284600
Eucalyptus sp.	Yes	No	3	0.75	350	Scattered Tree 53	277	696723	6283703
Yellow Box	Yes	No	3	0.75	100	Scattered Tree 54	277	695353	6282642
Yellow Box	Yes	No	3	0.75	200	Scattered Tree 55	277	695295	6282446
Yellow Box	Yes	No	3	0.75	85	Scattered Tree 56	277	695305	6282424

Biodiversity Offset Report
Flyers Creek Wind Farm

Yellow Box	Yes	No	3	0.75	200	Scattered Tree 57	277	695185	6282386
Yellow Box	Yes	Yes	3	1	110	Scattered Tree 58	277	694131	6284846
Yellow Box	Yes	Yes	3	1	60	Scattered Tree 59	277	694094	6284796
Candle Bark	Yes	Yes	3	1	150	Scattered Tree 60	277	694605	6287139
Long leaved box	Yes	No	3	0.75	120	Scattered Tree 61	277	694623	6287146
Yellow Box	Yes	No	3	0.75	100	Scattered Tree 62	277	691745	6288725
Yellow Box	Yes	Yes	3	1	120	Scattered Tree 63	277	691916	6289187
Yellow Box	Yes	No	3	0.75	140	Scattered Tree 64	277	691927	6289175
Yellow Box	Yes	No	3	0.75	80	Scattered Tree 65	277	691989	6289246
Long leaved box	Yes	No	3	0.75	60	Scattered Tree 66	277	690074	6289182
Yellow Box	Yes	Yes	3	1	130	Scattered Tree 67	277	689751	6289122
Yellow Box	Yes	Yes	3	1	250	Scattered Tree 68	277	689631	6289043
Blakelys Red Gum	Yes	Yes	3	1	130	Scattered Tree 69	277	689619	6289174
Yellow Box	Yes	Yes	3	1	100	Scattered Tree 70	277	689340	6288851
Yellow Box	Yes	No	3	0.75	90	Scattered Tree 71	277	692889	6290593
Yellow Box	Yes	No	3	0.75	100	Scattered Tree 72	277	692802	6290667
Yellow Box	Yes	No	3	0.75	100	Scattered Tree 73	277	692767	6290673
Apple Box	Yes	Yes	3	1	120	Scattered Tree 74	277	692783	6290735
Yellow Box	Yes	No	3	0.75	82	Scattered Tree 75	277	692546	6290793
Yellow Box	Yes	No	3	0.75	70	Scattered Tree 76	277	692582	6290789

Biodiversity Offset Report
Flyers Creek Wind Farm

Yellow Box	Yes	No	3	0.75	68	Scattered Tree 77	277	692576	6290814
Yellow Box	Yes	No	3	0.75	79	Scattered Tree 78	277	692333	6289634
Yellow Box	Yes	No	3	0.75	70	Scattered Tree 79	277	692317	6289641
Yellow Box	Yes	Yes	3	1	85	Scattered Tree 80	277	693357	6285082
Blakelys Red Gum	No	No	2	0.5	40	Scattered Tree 81	268	693337	6284010
Long leaved box	Yes	No	3	0.75	100	Scattered Tree 82	277	692974	6280316
Blakelys Red Gum	Yes	Yes	3	1	200	Scattered Tree 83	277	692881	6280961
Blakelys Red Gum	Yes	Yes	3	1	100	Scattered Tree 84	277	692951	6280932
Yellow Box	Yes	No	3	0.75	90	Scattered Tree 85	266	690432	6283060
White Box	Yes	Yes	3	1	75	Scattered Tree 86	277	690178	6283715
Kurrajong	Yes	No	3	0.75	70	Scattered Tree 87	277	690209	6283852
Yellow Box	Yes	Yes	3	1	90	Scattered Tree 88	277	692111	6283633
Yellow Box	Yes	No	3	0.75	80	Scattered Tree 89	277	692191	6283715
Yellow Box	Yes	Yes	3	1	130	Scattered Tree 90	277	692286	6283645
Blakelys Red Gum	Yes	Yes	3	1	75	Scattered Tree 91	277	692739	6282807
Blakelys Red Gum	Yes	No	3	0.75	70	Scattered Tree 92	277	692742	6282808
Blakelys Red Gum	Yes	No	3	0.75	80	Scattered Tree 93	277	692529	6283523
Blakelys Red Gum	Yes	Yes	3	1	65	Scattered Tree 94	277	692538	6283528
Yellow Box	Yes	Yes	3	1	110	Scattered Tree 95	277	692099	6284965
Yellow Box	No	No	2	0.5	3	Scattered Tree 96	277	692108	6284954

Biodiversity Offset Report
Flyers Creek Wind Farm

Blakelys Red Gum	Yes	Yes	3	1	assumed	Scattered Tree 97	277	692119	6284824
Blakelys Red Gum	No	No	2	0.5	25	Scattered Tree 98	277	690170	6287005
Yellow Box	Yes	Yes	3	1	150	Scattered Tree 99	277	694452	6285043
Eucalyptus sp.	Yes	Yes	3	1	assumed	Scattered Tree 100	277	692912	6290659
Yellow Box	Yes	Yes	3	1	70	Scattered Tree 101	277	692236	6289527
Blakelys Red Gum	Yes	Yes	3	1	100	Scattered Tree 102	277	690825	6289409
Yellow Box	Yes	No	3	0.75	85	Scattered Tree 103	277	690494	6289603
Yellow Box	Yes	No	3	0.75	90	Scattered Tree 104	277	690525	6289592
Blakelys Red Gum	Yes	No	3	0.75	200	Scattered Tree 105	277	690141	6289747
Yellow Box	Yes	Yes	3	1	90	Scattered Tree 106	277	692176	6284346
Yellow Box	Yes	No	3	0.75	130	Scattered Tree 107	266	690329	6282730
Yellow Box	Yes	No	3	0.75	65	Scattered Tree 108	277	692371	6282747
Yellow Box	Yes	No	3	0.75	100	Scattered Tree 109	277	692368	6282626
Long leaved Box	Yes	No	3	0.75	95	Scattered Tree 110	277	697104	6283394
Eucalyptus sp.	Yes	No	3	0.75	60	Scattered Tree 111	277	692914	6290682
Yellow Box	Yes	Yes	3	1	55	Scattered Tree 112	277	692386	6289718
Yellow Box	Yes	No	3	0.75	50	Scattered Tree 113	277	692373	6289695
Eucalyptus sp.	Yes	Yes	3	1	55	Scattered Tree 114	277	691819	6289513
Red Stringybark	Yes	Yes	3	1	70	Scattered Tree 115	277	691764	6289450
Yellow Box	No	No	2	0.5	45	Scattered Tree 116	277	691869	6289196

Yellow Box	Yes	No	3	0.75	50	Scattered Tree 117	277	691822	6289014
Eucalyptus sp.	Yes	Yes	3	1	50	Scattered Tree 118	277	691817	6289013
Yellow Box	Yes	Yes	3	1	60	Scattered Tree 119	277	691808	6289015
Yellow Box	Yes	No	3	0.75	55	Scattered Tree 120	277	691874	6288971
Yellow Box	Yes	No	3	0.75	70	Scattered Tree 121	277	691817	6288926
Yellow box	Yes	Yes	3	1	65	Scattered Tree 122	277	691831	6288799
Yellow Box	Yes	No	3	0.75	70	Scattered Tree 123	277	689909	6290219
Yellow Box	Yes	No	3	0.75	75	Scattered Tree 124	277	690083	6290205
Yellow Box	Yes	No	3	0.75	90	Scattered Tree 125	277	690122	6290132
Yellow Box	Yes	No	3	0.75	100	Scattered Tree 126	277	690180	6289901
Yellow Box	Yes	Yes	3	1	55	Scattered Tree 127	277	690235	6289914
Yellow box	Yes	No	3	0.75	55	Scattered Tree 128	277	690239	6289904
Blakelys Red Gum	Yes	No	3	0.75	85	Scattered Tree 129	277	690174	6289427
Yellow Box	Yes	No	3	0.75	75	Scattered Tree 130	277	690099	6289387
Yellow Box	Yes	No	3	0.75	75	Scattered Tree 131	277	690259	6289319
Eucalyptus sp.		No	3	1	assumed	Scattered Tree 132	277	692111	6285067
Eucalyptus sp.		No	3	1	assumed	Scattered Tree 133	277	692145	6284448
Eucalyptus sp.		No	3	1	assumed	Scattered Tree 134	277	692636	6283919
Eucalyptus sp.		Yes	3	1	assumed	Scattered Tree 135	277	693085	6284354
Eucalyptus sp.		No	3	1	assumed	Scattered Tree 136	277	693089	6284428

Biodiversity Offset Report
Flyers Creek Wind Farm

Eucalyptus sp.		No	3	1	assumed	Scattered Tree 137	277	693187	6284656
Eucalyptus sp.		No	3	1	assumed	Scattered Tree 138	277	693213	6284670
Eucalyptus sp.		No	3	1	assumed	Scattered Tree 139	268	693505	6284041
Yellow Box	Yes	Yes	3	1	80	Scattered Tree 140	277	690992	6283610
Blakelys Red Gum	Yes	Yes	3	1	100	Scattered Tree 141	277	690959	6283603
Blakelys Red Gum	Yes	Yes	3	1	100	Scattered Tree 142	277	690947	6283598
Yellow Box	Yes	No	3	0.75	55	Scattered Tree 143	277	690920	6283599
Yellow Box	Yes	Yes	3	1	80	Scattered Tree 144	266	690492	6282826
Eucalyptus sp.		No	3	1	assumed	Scattered Tree 145	266	690074	6282428
White Box		No	3	1	assumed	Scattered Tree 146	266	689874	6282231
Eucalyptus sp.		No	3	1	assumed	Scattered Tree 147	266	689529	6282554
Eucalyptus sp.		No	3	1	assumed	Scattered Tree 148	278	692447	6283307
Eucalyptus sp.		No	3	1	assumed	Scattered Tree 149	278	692493	6283295
Eucalyptus sp.		No	3	1	assumed	Scattered Tree 150	278	692469	6283282
Eucalyptus sp.		No	3	1	assumed	Scattered Tree 151	277	692477	6283226
Eucalyptus sp.		No	3	1	assumed	Scattered Tree 152	277	692554	6283211
Eucalyptus sp.		No	3	1	assumed	Scattered Tree 153	277	692821	6282898
Eucalyptus sp.		No	3	1	assumed	Scattered Tree 154	277	692849	6282877
Eucalyptus sp.		No	3	1	assumed	Scattered Tree 155	277	692608	6282770
Yellow Box	Yes	Yes	3	1	70	Scattered Tree 156	277	692816	6282510

Blakelys Red Gum	Yes	Yes	3	1	120	Scattered Tree 157	277	692650	6282436
Yellow Box	Yes	No	3	0.75	90	Scattered Tree 158	277	692645	6282423
Yellow Box	Yes	No	3	0.75	70	Scattered Tree 159	277	692837	6282382
Eucalyptus sp.		No	3	1	assumed	Scattered Tree 160	277	692805	6282280
Yellow box	Yes	Yes	3	1	100	Scattered Tree 161	277	692891	6282346
Yellow Box	Yes	No	3	0.75	70	Scattered Tree 162	277	692874	6282322
Eucalyptus sp.		No	3	1	assumed	Scattered Tree 163	268	694090	6282924
Eucalyptus sp.		No	3	1	assumed	Scattered Tree 164	268	693611	6282504
Red Stringybark	Yes	Yes	3	1	110	Scattered Tree 165	268	694670	6283220
Red Stringybark	Yes	No	3	0.75	70	Scattered Tree 166	268	694681	6283227
Red Stringybark	Yes	Yes	3	1	65	Scattered Tree 167	268	694686	6283231
Red Stringybark	Yes	No	3	0.75	110	Scattered Tree 168	268	694762	6283250
Yellow Box	Yes	Yes	3	1	110	Scattered Tree 169	277	695384	6282849
Yellow Box	No	No	2	0.5	35	Scattered Tree 170	277	695349	6282757
Yellow Box	Yes	No	2	0.75	45	Scattered Tree 171	277	695358	6282758
Yellow Box	Yes	No	3	0.75	110	Scattered Tree 172	277	695370	6282702
Long-leaved Box	Yes	Yes	3	1	70	Scattered Tree 173	277	695290	6282266
Long-leaved Box	Yes	Yes	3	1	200	Scattered Tree 174	277	695229	6282220
Long-leaved Box	Yes	Yes	3	1	assumed	Scattered Tree 175	277	695233	6282222
Eucalyptus sp.		No	3	1	assumed	Scattered Tree 176	277	696224	6284026

Eucalyptus sp.		No	3	1	assumed	Scattered Tree 177	277	696321	6284088
Eucalyptus sp.		No	3	1	assumed	Scattered Tree 178	277	696356	6284128
Eucalyptus sp.		No	3	1	assumed	Scattered Tree 179	277	696426	6284082
Eucalyptus sp.		No	3	1	assumed	Scattered Tree 180	277	696509	6284131
Eucalyptus sp.	Yes	Yes	3	1	80	Scattered Tree 181	277	697006	6283535
Yellow Box	Yes	Yes	3	1	110	Scattered Tree 182	277	696974	6283522
Long-leaved Box	Yes	No	3	0.75	80	Scattered Tree 183	277	696896	6283491
Long-leaved Box	Yes	Yes	3	1	150	Scattered Tree 184	277	696913	6283460
Blakelys Red Gum	Yes	Yes	3	1	90	Scattered Tree 185	277	692752	6281180
Blakelys Red Gum	Yes	No	3	0.75	90	Scattered Tree 186	277	692843	6281214
Blakelys Red Gum	Yes	No	3	0.75	90	Scattered Tree 187	277	692869	6281208
Blakelys Red Gum	Yes	Yes	3	1	120	Scattered Tree 188	277	692901	6281158
Blakelys Red Gum	Yes	Yes	3	1	120	Scattered Tree 189	277	692879	6281048
Eucalyptus sp.	Yes	Yes	3	1	80	Scattered Tree 190	277	692903	6280998
Eucalyptus sp.	Yes	No	3	0.75	50	Scattered Tree 191	277	692959	6280593
Yellow Box	Yes	No	3	0.75	130	Scattered Tree 192	277	692963	6280435
Yellow Box	Yes	No	3	0.75	100	Scattered Tree 193	277	693085	6280295
Yellow Box	Yes	Yes	3	1	110	Scattered Tree 194	277	693047	6280293
Yellow Box	Yes	No	3	0.5	65	Scattered Tree 195	277	692644	6290834
Eucalyptus sp.	Yes	Yes	3	1	assumed	Scattered Tree 196	277	691973	6285157

Biodiversity Offset Report
Flyers Creek Wind Farm

Eucalyptus sp.		No	3	1	assumed	Scattered Tree 197	268	693116	6284114
Yellow box	Yes	No	3	0.75	70	Scattered Tree 198	277	692653	6290773
Eucalyptus sp.		No	3	3	assumed	Scattered Tree 199	277	692677	6290006
Yellow Box	Yes	No	3	0.75	98	Scattered Tree 200	277	690129	6289899
Blakelys Red Gum	Yes	No	3	0.75	100	Scattered Tree 201	277	690898	6289456
Yellow Box	Yes	Yes	3	1	60	Scattered Tree 202	277	690119	6287105
Blakelys Red Gum	Yes	Yes	3	1	75	Scattered Tree 203	277	690164	6287081
Eucalyptus sp.		No	3	1	assumed	Scattered Tree 204	266	689851	6282299
Eucalyptus sp.		No	3	1	assumed	Scattered Tree 205	277	692579	6282778
Yellow Box	Yes	Yes	3	1	100	Scattered Tree 206	277	692738	6282401
Eucalyptus sp.		No	3	1	assumed	Scattered Tree 207	277	692661	6282378
Eucalyptus sp.		No	3	1	assumed	Scattered Tree 208	277	695230	6282813
Eucalyptus sp.		No	3	1	assumed	Scattered Tree 209	277	695262	6282864
Eucalyptus sp.		No	3	1	assumed	Scattered Tree 210	268	694674	6282905
Eucalyptus sp.		No	3	1	assumed	Scattered Tree 211	278	696637	6281996
Eucalyptus sp.		No	3	1	assumed	Scattered Tree 212	277	692932	6281121
Eucalyptus sp.		No	3	1	assumed	Scattered Tree 213	277	693372	6284610
Eucalyptus sp.		No	3	0	assumed	Scattered Tree 214	277	694269	6283882

Appendix E Fauna Species

Fauna species detected during the field surveys

Common Name	Scientific Name	Threatened Species
BIRDS		
Australian Magpie	<i>Gymnorhina tibicen</i>	
Australian Raven	<i>Corvus coronoides</i>	
Australasian Grebe	<i>Tachybaptus novaehollandiae</i>	
Black-faced Cuckoo-shrike	<i>Coracina novaehollandiae</i>	
Common Starling	<i>Sturnus vulgaris</i>	
Crimson Rosella	<i>Platycercus elegans</i>	
Eastern Spinebill	<i>Acanthorhynchus tenuirostris</i>	
Eastern Yellow Robin	<i>Eopsaltria australis</i>	
Galah	<i>Cacatua roseicapilla</i>	
Grey Fantail	<i>Rhipidura albiscapa</i>	
Grey Shrike-thrush	<i>Colluricincla harmonica</i>	
Grey Teal	<i>Anas gracilis</i>	
Laughing Kookaburra	<i>Dacelo novaeguineae</i>	
Little Raven	<i>Corvus mellori</i>	
Mistletoe Bird	<i>Dicaeum hirundinaceum</i>	
Noisy Friarbird	<i>Philemon corniculatus</i>	
Magpie-Lark	<i>Grallina cyanoleuca</i>	
Possible Brush-tailed Phascogale	<i>Phascogale tapoatafa</i>	

Common Name	Scientific Name	Threatened Species
Red Wattlebird	<i>Anthochaera carunculata</i>	
Red-browed Firetail	<i>Neochmia temporalis</i>	
Red-rumped Parrot	<i>Psephotus haematonotus</i>	
Restless Flycatcher	<i>Myiagra inquieta</i>	
Rufous Whistler	<i>Pachycephala rufiventris</i>	
Sacred Kingfisher	<i>Todiramphus sanctus</i>	
Southern Boobook	<i>Ninox boobook</i>	
Spotted Pardalote	<i>Pardalotus punctatus</i>	
Striated Pardalote	<i>Pardalotus striatus</i>	
Sulphur-crested Cockatoo	<i>Cacatua galerita</i>	
Superb Fairy Wren	<i>Malurus cyaneus</i>	
Superb Parrot	<i>Polytelis swainsonii</i>	Vulnerable - EPBC Vulnerable - BC
European Starling (Exotic)	<i>Sturnus vulgaris</i>	
Tawny Frogmouth	<i>Podargus strigoides</i>	
Varied Sittella	<i>Daphoenositta chrysoptera</i>	
Wallaroo	<i>Osphranter robustus</i>	
White-browed Scrubwren	<i>Sericornis frontalis</i>	
White-naped Honeyeater	<i>Melithreptus lunatus</i>	
White-throated Gerygone	<i>Gerygone olivacea</i>	
White-throated Treecreeper	<i>Cormobates leucophaea</i>	
White-winged Chough	<i>Corcorax melanorhamphos</i>	

Common Name	Scientific Name	Threatened Species
Hardhead	<i>Aythya australis</i>	
Australian Wood Duck	<i>Chenonetta jubata</i>	
Willy Wagtail	<i>Rhipidura leucophrys</i>	
Yellow-rumped Thornbill	<i>Acanthiza chrysorrhoa</i>	
FROGS		
Common Eastern Froglet	<i>Crinia signifera</i>	
Banjo Frog	<i>Limnodynastes dumerlii</i>	
Peron's Tree Frog	<i>Litoria peronii</i>	
Spotted Marsh Frog	<i>Limnodynastes tasmaniensis</i>	
MAMMALS		
Antechinus	<i>Antechinus sp.</i>	
Brush Tailed Possum	<i>Trichosurus vulpecula</i>	
White-striped Free-tailed Bat	<i>Tadarida australis</i>	
Southern Freetail Bat	<i>Mormopterus planiceps</i>	
Eastern Freetail Bat	<i>Mormopterus ridei</i>	
Goulds Wattled Bat	<i>Chalinolobus gouldii</i>	
Chocolate Wattled Bat	<i>Chalinolobus morio</i>	
Large Bent-wing Bat	<i>Miniopterus oceanensis</i>	Vulnerable - BC
Unidentified Long-eared Bat	<i>Nyctophilus sp.</i>	
Large Forest Bat	<i>Vespadelus darlingtoni</i>	
Little Forest Bat	<i>Vespadelus vulturnus</i>	

Appendix F Protected Matters Search Results



EPBC Act Protected Matters Report

This report provides general guidance on matters of national environmental significance and other matters protected by the EPBC Act in the area you have selected.

Information on the coverage of this report and qualifications on data supporting this report are contained in the caveat at the end of the report.

Information is available about [Environment Assessments](#) and the EPBC Act including significance guidelines, forms and application process details.

Report created: 20/11/20 12:25:07

[Summary](#)

[Details](#)

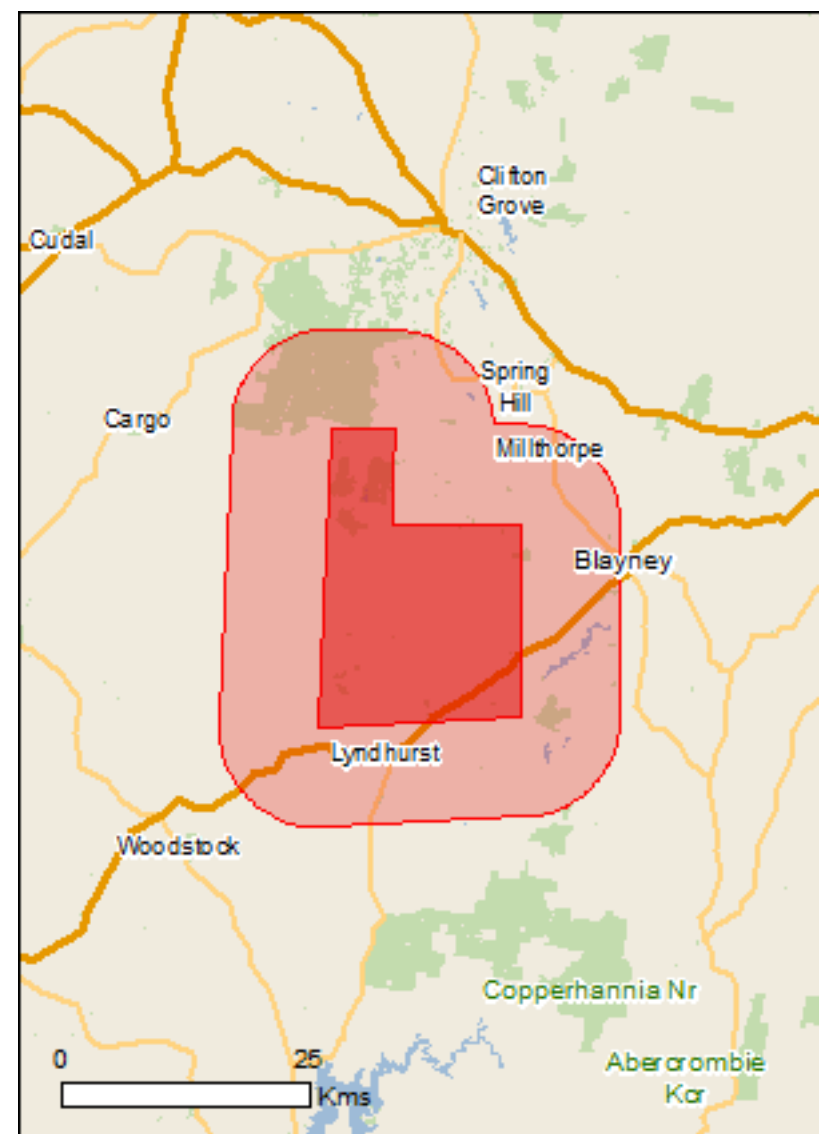
[Matters of NES](#)

[Other Matters Protected by the EPBC Act](#)

[Extra Information](#)

[Caveat](#)

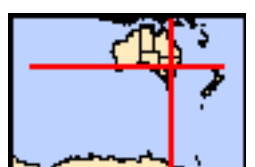
[Acknowledgements](#)



This map may contain data which are ©Commonwealth of Australia (Geoscience Australia), ©PSMA 2015

[Coordinates](#)

[Buffer: 10.0Km](#)



Summary

Matters of National Environmental Significance

This part of the report summarises the matters of national environmental significance that may occur in, or may relate to, the area you nominated. Further information is available in the detail part of the report, which can be accessed by scrolling or following the links below. If you are proposing to undertake an activity that may have a significant impact on one or more matters of national environmental significance then you should consider the [Administrative Guidelines on Significance](#).

World Heritage Properties:	None
National Heritage Places:	None
Wetlands of International Importance:	5
Great Barrier Reef Marine Park:	None
Commonwealth Marine Area:	None
Listed Threatened Ecological Communities:	4
Listed Threatened Species:	36
Listed Migratory Species:	11

Other Matters Protected by the EPBC Act

This part of the report summarises other matters protected under the Act that may relate to the area you nominated. Approval may be required for a proposed activity that significantly affects the environment on Commonwealth land, when the action is outside the Commonwealth land, or the environment anywhere when the action is taken on Commonwealth land. Approval may also be required for the Commonwealth or Commonwealth agencies proposing to take an action that is likely to have a significant impact on the environment anywhere.

The EPBC Act protects the environment on Commonwealth land, the environment from the actions taken on Commonwealth land, and the environment from actions taken by Commonwealth agencies. As heritage values of a place are part of the 'environment', these aspects of the EPBC Act protect the Commonwealth Heritage values of a Commonwealth Heritage place. Information on the new heritage laws can be found at <http://www.environment.gov.au/heritage>

A [permit](#) may be required for activities in or on a Commonwealth area that may affect a member of a listed threatened species or ecological community, a member of a listed migratory species, whales and other cetaceans, or a member of a listed marine species.

Commonwealth Land:	2
Commonwealth Heritage Places:	None
Listed Marine Species:	18
Whales and Other Cetaceans:	None
Critical Habitats:	None
Commonwealth Reserves Terrestrial:	None
Australian Marine Parks:	None

Extra Information

This part of the report provides information that may also be relevant to the area you have nominated.

State and Territory Reserves:	2
Regional Forest Agreements:	None
Invasive Species:	31
Nationally Important Wetlands:	None
Key Ecological Features (Marine)	None

Details

Matters of National Environmental Significance

Wetlands of International Importance (Ramsar)	[Resource Information]
Name	Proximity
Banrock station wetland complex	700 - 800km upstream
Hattah-kulkyne lakes	600 - 700km upstream
Riverland	700 - 800km upstream
The coorong, and lakes alexandrina and albert wetland	800 - 900km upstream
The macquarie marshes	200 - 300km upstream

Listed Threatened Ecological Communities

[Resource Information]

For threatened ecological communities where the distribution is well known, maps are derived from recovery plans, State vegetation maps, remote sensing imagery and other sources. Where threatened ecological community distributions are less well known, existing vegetation maps and point location data are used to produce indicative distribution maps.

Name	Status	Type of Presence
Grey Box (Eucalyptus microcarpa) Grassy Woodlands and Derived Native Grasslands of South-eastern Australia	Endangered	Community likely to occur within area
Natural Temperate Grassland of the South Eastern Highlands	Critically Endangered	Community likely to occur within area
Poplar Box Grassy Woodland on Alluvial Plains	Endangered	Community may occur within area
White Box-Yellow Box-Blakely's Red Gum Grassy Woodland and Derived Native Grassland	Critically Endangered	Community likely to occur within area

Listed Threatened Species

[Resource Information]

Name	Status	Type of Presence
Birds		
Anthochaera phrygia Regent Honeyeater [82338]	Critically Endangered	Species or species habitat likely to occur within area
Botaurus poiciloptilus Australasian Bittern [1001]	Endangered	Species or species habitat may occur within area
Calidris ferruginea Curlew Sandpiper [856]	Critically Endangered	Species or species habitat likely to occur within area
Falco hypoleucos Grey Falcon [929]	Vulnerable	Species or species habitat likely to occur within area
Grantiella picta Painted Honeyeater [470]	Vulnerable	Species or species habitat known to occur within area
Hirundapus caudacutus White-throated Needletail [682]	Vulnerable	Species or species habitat likely to occur within area
Lathamus discolor Swift Parrot [744]	Critically Endangered	Species or species habitat known to occur within area

Name	Status	Type of Presence
Leipoa ocellata Malleefowl [934]	Vulnerable	Species or species habitat known to occur within area
Numenius madagascariensis Eastern Curlew, Far Eastern Curlew [847]	Critically Endangered	Species or species habitat may occur within area
Polytelis swainsonii Superb Parrot [738]	Vulnerable	Species or species habitat known to occur within area
Rostratula australis Australian Painted Snipe [77037]	Endangered	Species or species habitat known to occur within area
Fish		
Maccullochella macquariensis Trout Cod [26171]	Endangered	Species or species habitat may occur within area
Maccullochella peelii Murray Cod [66633]	Vulnerable	Species or species habitat may occur within area
Macquaria australasica Macquarie Perch [66632]	Endangered	Species or species habitat may occur within area
Frogs		
Litoria booroolongensis Booroolong Frog [1844]	Endangered	Species or species habitat likely to occur within area
Litoria castanea Yellow-spotted Tree Frog, Yellow-spotted Bell Frog [1848]	Critically Endangered	Species or species habitat likely to occur within area
Insects		
Synemon plana Golden Sun Moth [25234]	Critically Endangered	Species or species habitat may occur within area
Mammals		
Chalinolobus dwyeri Large-eared Pied Bat, Large Pied Bat [183]	Vulnerable	Species or species habitat known to occur within area
Dasyurus maculatus maculatus (SE mainland population) Spot-tailed Quoll, Spotted-tail Quoll, Tiger Quoll (southeastern mainland population) [75184]	Endangered	Species or species habitat likely to occur within area
Nyctophilus corbeni Corben's Long-eared Bat, South-eastern Long-eared Bat [83395]	Vulnerable	Species or species habitat likely to occur within area
Petauroides volans Greater Glider [254]	Vulnerable	Species or species habitat known to occur within area
Petrogale penicillata Brush-tailed Rock-wallaby [225]	Vulnerable	Species or species habitat may occur within area
Phascolarctos cinereus (combined populations of Qld, NSW and the ACT) Koala (combined populations of Queensland, New South Wales and the Australian Capital Territory) [85104]	Vulnerable	Species or species habitat likely to occur within area
Pteropus poliocephalus Grey-headed Flying-fox [186]	Vulnerable	Foraging, feeding or related behaviour may occur within area
Plants		

Name	Status	Type of Presence
Ammobium craspedioides Yass Daisy [20758]	Vulnerable	Species or species habitat known to occur within area
Eucalyptus aggregata Black Gum [20890]	Vulnerable	Species or species habitat known to occur within area
Eucalyptus canobolensis Silver-leaf Candlebark, Mt Canobolas Candlebark [64896]	Endangered	Species or species habitat known to occur within area
Eucalyptus pulverulenta Silver-leaved Mountain Gum, Silver-leaved Gum [21537]	Vulnerable	Species or species habitat known to occur within area
Euphrasia arguta [4325]	Critically Endangered	Species or species habitat may occur within area
Leucochrysum albicans subsp. tricolor Hoary Sunray, Grassland Paper-daisy [89104]	Endangered	Species or species habitat may occur within area
Prasophyllum petilum Tarengo Leek Orchid [55144]	Endangered	Species or species habitat may occur within area
Swainsona recta Small Purple-pea, Mountain Swainson-pea, Small Purple Pea [7580]	Endangered	Species or species habitat known to occur within area
Thesium australe Austral Toadflax, Toadflax [15202]	Vulnerable	Species or species habitat likely to occur within area
Tylophora linearis [55231]	Endangered	Species or species habitat may occur within area
Reptiles		
Aprasia parapulchella Pink-tailed Worm-lizard, Pink-tailed Legless Lizard [1665]	Vulnerable	Species or species habitat likely to occur within area
Delma impar Striped Legless Lizard, Striped Snake-lizard [1649]	Vulnerable	Species or species habitat may occur within area
Listed Migratory Species		[Resource Information]
* Species is listed under a different scientific name on the EPBC Act - Threatened Species list.		
Name	Threatened	Type of Presence
Migratory Marine Birds		
Apus pacificus Fork-tailed Swift [678]		Species or species habitat likely to occur within area
Migratory Terrestrial Species		
Hirundapus caudacutus White-throated Needletail [682]	Vulnerable	Species or species habitat likely to occur within area
Motacilla flava Yellow Wagtail [644]		Species or species habitat may occur within area
Myiagra cyanoleuca Satin Flycatcher [612]		Species or species habitat known to occur within area

Name	Threatened	Type of Presence
Rhipidura rufifrons Rufous Fantail [592]		Species or species habitat known to occur within area
Migratory Wetlands Species		
Actitis hypoleucos Common Sandpiper [59309]		Species or species habitat may occur within area
Calidris acuminata Sharp-tailed Sandpiper [874]		Species or species habitat may occur within area
Calidris ferruginea Curlew Sandpiper [856]	Critically Endangered	Species or species habitat likely to occur within area
Calidris melanotos Pectoral Sandpiper [858]		Species or species habitat may occur within area
Gallinago hardwickii Latham's Snipe, Japanese Snipe [863]		Species or species habitat may occur within area
Numenius madagascariensis Eastern Curlew, Far Eastern Curlew [847]	Critically Endangered	Species or species habitat may occur within area

Other Matters Protected by the EPBC Act

Commonwealth Land [\[Resource Information \]](#)

The Commonwealth area listed below may indicate the presence of Commonwealth land in this vicinity. Due to the unreliability of the data source, all proposals should be checked as to whether it impacts on a Commonwealth area, before making a definitive decision. Contact the State or Territory government land department for further information.

Name
Commonwealth Land - Airservices Australia
Commonwealth Land - Australian Telecommunications Commission

Listed Marine Species [\[Resource Information \]](#)

* Species is listed under a different scientific name on the EPBC Act - Threatened Species list.

Name	Threatened	Type of Presence
Birds		
Actitis hypoleucos Common Sandpiper [59309]		Species or species habitat may occur within area
Apus pacificus Fork-tailed Swift [678]		Species or species habitat likely to occur within area
Ardea alba Great Egret, White Egret [59541]		Species or species habitat likely to occur within area
Ardea ibis Cattle Egret [59542]		Species or species habitat may occur within area
Calidris acuminata Sharp-tailed Sandpiper [874]		Species or species habitat may occur within area
Calidris ferruginea Curlew Sandpiper [856]	Critically Endangered	Species or species habitat likely to occur within area

Name	Threatened	Type of Presence
Calidris melanotos Pectoral Sandpiper [858]		Species or species habitat may occur within area
Chrysococcyx osculans Black-eared Cuckoo [705]		Species or species habitat known to occur within area
Gallinago hardwickii Latham's Snipe, Japanese Snipe [863]		Species or species habitat may occur within area
Haliaeetus leucogaster White-bellied Sea-Eagle [943]		Species or species habitat likely to occur within area
Hirundapus caudacutus White-throated Needletail [682]	Vulnerable	Species or species habitat likely to occur within area
Lathamus discolor Swift Parrot [744]	Critically Endangered	Species or species habitat known to occur within area
Merops ornatus Rainbow Bee-eater [670]		Species or species habitat may occur within area
Motacilla flava Yellow Wagtail [644]		Species or species habitat may occur within area
Myiagra cyanoleuca Satin Flycatcher [612]		Species or species habitat known to occur within area
Numenius madagascariensis Eastern Curlew, Far Eastern Curlew [847]	Critically Endangered	Species or species habitat may occur within area
Rhipidura rufifrons Rufous Fantail [592]		Species or species habitat known to occur within area
Rostratula benghalensis (sensu lato) Painted Snipe [889]	Endangered*	Species or species habitat known to occur within area

Extra Information

State and Territory Reserves	[Resource Information]
Name	State
Forestry Management Areas in Bathurst (FMZ2)	NSW
Mount Canobolas	NSW

Invasive Species

[[Resource Information](#)]

Weeds reported here are the 20 species of national significance (WoNS), along with other introduced plants that are considered by the States and Territories to pose a particularly significant threat to biodiversity. The following feral animals are reported: Goat, Red Fox, Cat, Rabbit, Pig, Water Buffalo and Cane Toad. Maps from Landscape Health Project, National Land and Water Resources Audit, 2001.

Name	Status	Type of Presence
Birds		
Acridotheres tristis Common Myna, Indian Myna [387]		Species or species habitat likely to occur within area
Alauda arvensis Skylark [656]		Species or species habitat likely to occur within area
Anas platyrhynchos Mallard [974]		Species or species habitat likely to occur within area
Carduelis carduelis European Goldfinch [403]		Species or species habitat likely to occur within area
Columba livia Rock Pigeon, Rock Dove, Domestic Pigeon [803]		Species or species habitat likely to occur within area
Passer domesticus House Sparrow [405]		Species or species habitat likely to occur within area
Passer montanus Eurasian Tree Sparrow [406]		Species or species habitat likely to occur within area
Streptopelia chinensis Spotted Turtle-Dove [780]		Species or species habitat likely to occur within area
Sturnus vulgaris Common Starling [389]		Species or species habitat likely to occur within area
Turdus merula Common Blackbird, Eurasian Blackbird [596]		Species or species habitat likely to occur within area
Mammals		
Bos taurus Domestic Cattle [16]		Species or species habitat likely to occur within area
Canis lupus familiaris Domestic Dog [82654]		Species or species habitat likely to occur within area
Capra hircus Goat [2]		Species or species habitat likely to occur within area
Felis catus Cat, House Cat, Domestic Cat [19]		Species or species habitat likely to occur within area
Feral deer Feral deer species in Australia [85733]		Species or species habitat likely to occur within area
Lepus capensis Brown Hare [127]		Species or species habitat likely to occur within area

Name	Status	Type of Presence
Mus musculus House Mouse [120]		Species or species habitat likely to occur within area
Oryctolagus cuniculus Rabbit, European Rabbit [128]		Species or species habitat likely to occur within area
Rattus rattus Black Rat, Ship Rat [84]		Species or species habitat likely to occur within area
Sus scrofa Pig [6]		Species or species habitat likely to occur within area
Vulpes vulpes Red Fox, Fox [18]		Species or species habitat likely to occur within area
Plants		
Asparagus asparagoides Bridal Creeper, Bridal Veil Creeper, Smilax, Florist's Smilax, Smilax Asparagus [22473]		Species or species habitat likely to occur within area
Cytisus scoparius Broom, English Broom, Scotch Broom, Common Broom, Scottish Broom, Spanish Broom [5934]		Species or species habitat likely to occur within area
Genista monspessulana Montpellier Broom, Cape Broom, Canary Broom, Common Broom, French Broom, Soft Broom [20126]		Species or species habitat likely to occur within area
Genista sp. X Genista monspessulana Broom [67538]		Species or species habitat may occur within area
Nassella neesiana Chilean Needle grass [67699]		Species or species habitat likely to occur within area
Nassella trichotoma Serrated Tussock, Yass River Tussock, Yass Tussock, Nassella Tussock (NZ) [18884]		Species or species habitat likely to occur within area
Pinus radiata Radiata Pine Monterey Pine, Insignis Pine, Wilding Pine [20780]		Species or species habitat may occur within area
Rubus fruticosus aggregate Blackberry, European Blackberry [68406]		Species or species habitat likely to occur within area
Salix spp. except S.babylonica, S.x calodendron & S.x reichardtii Willows except Weeping Willow, Pussy Willow and Sterile Pussy Willow [68497]		Species or species habitat likely to occur within area
Ulex europaeus Gorse, Furze [7693]		Species or species habitat likely to occur within area

Caveat

The information presented in this report has been provided by a range of data sources as acknowledged at the end of the report.

This report is designed to assist in identifying the locations of places which may be relevant in determining obligations under the Environment Protection and Biodiversity Conservation Act 1999. It holds mapped locations of World and National Heritage properties, Wetlands of International and National Importance, Commonwealth and State/Territory reserves, listed threatened, migratory and marine species and listed threatened ecological communities. Mapping of Commonwealth land is not complete at this stage. Maps have been collated from a range of sources at various resolutions.

Not all species listed under the EPBC Act have been mapped (see below) and therefore a report is a general guide only. Where available data supports mapping, the type of presence that can be determined from the data is indicated in general terms. People using this information in making a referral may need to consider the qualifications below and may need to seek and consider other information sources.

For threatened ecological communities where the distribution is well known, maps are derived from recovery plans, State vegetation maps, remote sensing imagery and other sources. Where threatened ecological community distributions are less well known, existing vegetation maps and point location data are used to produce indicative distribution maps.

Threatened, migratory and marine species distributions have been derived through a variety of methods. Where distributions are well known and if time permits, maps are derived using either thematic spatial data (i.e. vegetation, soils, geology, elevation, aspect, terrain, etc) together with point locations and described habitat; or environmental modelling (MAXENT or BIOCLIM habitat modelling) using point locations and environmental data layers.

Where very little information is available for species or large number of maps are required in a short time-frame, maps are derived either from 0.04 or 0.02 decimal degree cells; by an automated process using polygon capture techniques (static two kilometre grid cells, alpha-hull and convex hull); or captured manually or by using topographic features (national park boundaries, islands, etc). In the early stages of the distribution mapping process (1999-early 2000s) distributions were defined by degree blocks, 100K or 250K map sheets to rapidly create distribution maps. More reliable distribution mapping methods are used to update these distributions as time permits.

Only selected species covered by the following provisions of the EPBC Act have been mapped:

- migratory and
- marine

The following species and ecological communities have not been mapped and do not appear in reports produced from this database:

- threatened species listed as extinct or considered as vagrants
- some species and ecological communities that have only recently been listed
- some terrestrial species that overfly the Commonwealth marine area
- migratory species that are very widespread, vagrant, or only occur in small numbers

The following groups have been mapped, but may not cover the complete distribution of the species:

- non-threatened seabirds which have only been mapped for recorded breeding sites
- seals which have only been mapped for breeding sites near the Australian continent

Such breeding sites may be important for the protection of the Commonwealth Marine environment.

Coordinates

-33.656487 148.973048,-33.429857 148.984034,-33.431003 149.041712,-33.503176 149.040339,-33.502031 149.155695,-33.631335 149.155695,-33.648485 149.155695,-33.656487 148.973048

Acknowledgements

This database has been compiled from a range of data sources. The department acknowledges the following custodians who have contributed valuable data and advice:

- [-Office of Environment and Heritage, New South Wales](#)
- [-Department of Environment and Primary Industries, Victoria](#)
- [-Department of Primary Industries, Parks, Water and Environment, Tasmania](#)
- [-Department of Environment, Water and Natural Resources, South Australia](#)
- [-Department of Land and Resource Management, Northern Territory](#)
- [-Department of Environmental and Heritage Protection, Queensland](#)
- [-Department of Parks and Wildlife, Western Australia](#)
- [-Environment and Planning Directorate, ACT](#)
- [-Birdlife Australia](#)
- [-Australian Bird and Bat Banding Scheme](#)
- [-Australian National Wildlife Collection](#)
- [-Natural history museums of Australia](#)
- [-Museum Victoria](#)
- [-Australian Museum](#)
- [-South Australian Museum](#)
- [-Queensland Museum](#)
- [-Online Zoological Collections of Australian Museums](#)
- [-Queensland Herbarium](#)
- [-National Herbarium of NSW](#)
- [-Royal Botanic Gardens and National Herbarium of Victoria](#)
- [-Tasmanian Herbarium](#)
- [-State Herbarium of South Australia](#)
- [-Northern Territory Herbarium](#)
- [-Western Australian Herbarium](#)
- [-Australian National Herbarium, Canberra](#)
- [-University of New England](#)
- [-Ocean Biogeographic Information System](#)
- [-Australian Government, Department of Defence Forestry Corporation, NSW](#)
- [-Geoscience Australia](#)
- [-CSIRO](#)
- [-Australian Tropical Herbarium, Cairns](#)
- [-eBird Australia](#)
- [-Australian Government – Australian Antarctic Data Centre](#)
- [-Museum and Art Gallery of the Northern Territory](#)
- [-Australian Government National Environmental Science Program](#)
- [-Australian Institute of Marine Science](#)
- [-Reef Life Survey Australia](#)
- [-American Museum of Natural History](#)
- [-Queen Victoria Museum and Art Gallery, Inveresk, Tasmania](#)
- [-Tasmanian Museum and Art Gallery, Hobart, Tasmania](#)
- [-Other groups and individuals](#)

The Department is extremely grateful to the many organisations and individuals who provided expert advice and information on numerous draft distributions.

Please feel free to provide feedback via the [Contact Us](#) page.

© Commonwealth of Australia

Department of Agriculture Water and the Environment

GPO Box 858

Canberra City ACT 2601 Australia

+61 2 6274 1111

Appendix G BAM Calculator Credit Report

G.1 Vegetation Credits

G.2 Paddock Tree Credits

BAM Biodiversity Credit Report (Like for like)

Proposal Details

Assessment Id	Proposal Name	BAM data last updated *
00016900/BAAS18074/19/00016901	Flyers Creek Wind Farm	10/06/2021
Assessor Name	Assessor Number	BAM Data version *
		45
Proponent Names	Report Created	BAM Case Status
	15/10/2021	Finalised
Assessment Revision	Assessment Type	Date Finalised
1	Part 5 Activities	15/10/2021

* Disclaimer: BAM data last updated may indicate either complete or partial update of the BAM calculator database. BAM calculator database may not be completely aligned with Bionet.

Potential Serious and Irreversible Impacts

Name of threatened ecological community	Listing status	Name of Plant Community Type/ID
White Box - Yellow Box - Blakely's Red Gum Grassy Woodland and Derived Native Grassland in the NSW North Coast, New England Tableland, Nandewar, Brigalow Belt South, Sydney Basin, South Eastern Highla	Critically Endangered Ecological Community	1330-Yellow Box - Blakely's Red Gum grassy woodland on the tablelands, South Eastern Highlands Bioregion

BAM Biodiversity Credit Report (Like for like)

White Box - Yellow Box - Blakely's Red Gum Grassy Woodland and Derived Native Grassland in the NSW North Coast, New England Tableland, Nandewar, Brigalow Belt South, Sydney Basin, South Eastern Highla	Critically Endangered Ecological Community	266-White Box grassy woodland in the upper slopes sub-region of the NSW South Western Slopes Bioregion
White Box - Yellow Box - Blakely's Red Gum Grassy Woodland and Derived Native Grassland in the NSW North Coast, New England Tableland, Nandewar, Brigalow Belt South, Sydney Basin, South Eastern Highla	Critically Endangered Ecological Community	277-Blakely's Red Gum - Yellow Box grassy tall woodland of the NSW South Western Slopes Bioregion
White Box - Yellow Box - Blakely's Red Gum Grassy Woodland and Derived Native Grassland in the NSW North Coast, New England Tableland, Nandewar, Brigalow Belt South, Sydney Basin, South Eastern Highla	Critically Endangered Ecological Community	278-Riparian Blakely's Red Gum - box - shrub - sedge - grass tall open forest of the central NSW South Western Slopes Bioregion

Species

Nil

Additional Information for Approval

PCTs With Customized Benchmarks

PCT

No Changes

Predicted Threatened Species Not On Site

BAM Biodiversity Credit Report (Like for like)

Name

No Changes

Ecosystem Credit Summary (Number and class of biodiversity credits to be retired)

Name of Plant Community Type/ID	Name of threatened ecological community	Area of impact	HBT Cr	No HBT Cr	Total credits to be retired
1330-Yellow Box - Blakely's Red Gum grassy woodland on the tablelands, South Eastern Highlands Bioregion	Not a TEC	0.5	0	8	8
1330-Yellow Box - Blakely's Red Gum grassy woodland on the tablelands, South Eastern Highlands Bioregion	White Box - Yellow Box - Blakely's Red Gum Grassy Woodland and Derived Native Grassland in the NSW North Coast, New England Tableland, Nandewar, Brigalow Belt South, Sydney Basin, South Eastern Highla	2.0	68	0	68
266-White Box grassy woodland in the upper slopes sub-region of the NSW South Western Slopes Bioregion	White Box - Yellow Box - Blakely's Red Gum Grassy Woodland and Derived Native Grassland in the NSW North Coast, New England Tableland, Nandewar, Brigalow Belt South, Sydney Basin, South Eastern Highla	0.5	0	0	0
268-White Box - Blakely's Red Gum - Long-leaved Box - Nortons Box - Red Stringybark grass-shrub woodland on shallow soils on hills in the NSW South Western Slopes Bioregion	Not a TEC	4.4	0	49	49



BAM Biodiversity Credit Report (Like for like)

277-Blakely's Red Gum - Yellow Box grassy tall woodland of the NSW South Western Slopes Bioregion	White Box - Yellow Box - Blakely's Red Gum Grassy Woodland and Derived Native Grassland in the NSW North Coast, New England Tableland, Nandewar, Brigalow Belt South, Sydney Basin, South Eastern Highla	23.0	0	339	339
278-Riparian Blakely's Red Gum - box - shrub - sedge - grass tall open forest of the central NSW South Western Slopes Bioregion	White Box - Yellow Box - Blakely's Red Gum Grassy Woodland and Derived Native Grassland in the NSW North Coast, New England Tableland, Nandewar, Brigalow Belt South, Sydney Basin, South Eastern Highla	0.5	0	22	22
766-Carex sedgeland of the slopes and tablelands	Not a TEC	0.2	0	3	3

266-White Box grassy woodland in the upper slopes sub-region of the NSW South Western Slopes Bioregion	Like-for-like credit retirement options					
	Name of offset trading group	Trading group	Zone	HBT	Credits	IBRA region
	White Box - Yellow Box - Blakely's Red Gum Grassy Woodland and Derived Native Grassland in the NSW North Coast, New England Tableland, Nandewar, Brigalow Belt South, Sydney Basin, South Eastern Highla This includes PCT's:	-	266_Poor_Condition	Yes	0	Orange, Bathurst, Crookwell, Hill End, Inland Slopes and Oberon. or Any IBRA subregion that is within 100 kilometers of the outer edge of the impacted site.



BAM Biodiversity Credit Report (Like for like)

74, 75, 83, 250, 266, 267, 268, 270, 274, 275, 276, 277, 278, 279, 280, 281, 282, 283, 284, 286, 298, 302, 312, 341, 342, 347, 350, 352, 356, 367, 381, 382, 395, 401, 403, 421, 433, 434, 435, 436, 437, 451, 483, 484, 488, 492, 496, 508, 509, 510, 511, 528, 538, 544, 563, 567, 571, 589, 590, 597, 599, 618, 619, 622, 633, 654, 702, 703, 704, 705, 710, 711, 796, 797, 799, 840, 847, 851, 921, 1099, 1103, 1303, 1304, 1307, 1324, 1329, 1330, 1331, 1332, 1333, 1334, 1383, 1401, 1512, 1606, 1608, 1611, 1691, 1693, 1695, 1698					
---	--	--	--	--	--

BAM Biodiversity Credit Report (Like for like)

268-White Box - Blakely's Red Gum - Long-leaved Box - Nortons Box - Red Stringybark grass-shrub woodland on shallow soils on hills in the NSW South Western Slopes Bioregion	Like-for-like credit retirement options					
	Class	Trading group	Zone	HBT	Credits	IBRA region
	Western Slopes Grassy Woodlands This includes PCT's: 201, 202, 266, 267, 268, 272, 274, 275, 276, 277, 278, 279, 280, 281, 282, 283, 284, 286, 301, 316, 326, 337, 347, 383, 421, 426, 433, 434, 437, 441, 444, 461, 483, 509, 516, 544, 589, 590, 593, 599, 847, 955, 1303, 1304, 1315, 1329, 1383, 1401, 1609, 1693, 1695	Western Slopes Grassy Woodlands >=50% and <70%	268_Derived_Grassland	No	0	Orange, Bathurst, Crookwell, Hill End, Inland Slopes and Oberon. or Any IBRA subregion that is within 100 kilometers of the outer edge of the impacted site.

BAM Biodiversity Credit Report (Like for like)

	Western Slopes Grassy Woodlands This includes PCT's: 201, 202, 266, 267, 268, 272, 274, 275, 276, 277, 278, 279, 280, 281, 282, 283, 284, 286, 301, 316, 326, 337, 347, 383, 421, 426, 433, 434, 437, 441, 444, 461, 483, 509, 516, 544, 589, 590, 593, 599, 847, 955, 1303, 1304, 1315, 1329, 1383, 1401, 1609, 1693, 1695	Western Slopes Grassy Woodlands >=50% and <70%	268_Moderate_Condition	No	49	Orange, Bathurst, Crookwell, Hill End, Inland Slopes and Oberon. or Any IBRA subregion that is within 100 kilometers of the outer edge of the impacted site.
277-Blakely's Red Gum - Yellow Box grassy tall woodland of the NSW South Western Slopes Bioregion	Like-for-like credit retirement options					
	Name of offset trading group	Trading group	Zone	HBT	Credits	IBRA region
	White Box - Yellow Box - Blakely's Red Gum Grassy Woodland and Derived Native Grassland in the NSW North Coast, New	-	277_DerivedGrassland_mod	No	3	Orange, Bathurst, Crookwell, Hill End, Inland Slopes and Oberon. or Any IBRA subregion that is within 100 kilometers of the outer edge of the impacted site.



BAM Biodiversity Credit Report (Like for like)

	<p>England Tableland, Nandewar, Brigalow Belt South, Sydney Basin, South Eastern Highla This includes PCT's: 74, 75, 83, 250, 266, 267, 268, 270, 274, 275, 276, 277, 278, 279, 280, 281, 282, 283, 284, 286, 298, 302, 312, 341, 342, 347, 350, 352, 356, 367, 381, 382, 395, 401, 403, 421, 433, 434, 435, 436, 437, 451, 483, 484, 488, 492, 496, 508, 509, 510, 511, 528, 538, 544, 563, 567, 571, 589, 590, 597, 599, 618, 619, 622, 633, 654, 702, 703, 704, 705, 710, 711, 796, 797, 799, 840, 847, 851, 921, 1099, 1103, 1303, 1304, 1307, 1324, 1329, 1330, 1331, 1332, 1333, 1334, 1383, 1401, 1512, 1606, 1608, 1611, 1691, 1693, 1695, 1698</p>					
--	---	--	--	--	--	--

BAM Biodiversity Credit Report (Like for like)

	<p>White Box - Yellow Box - Blakely's Red Gum Grassy Woodland and Derived Native Grassland in the NSW North Coast, New England Tableland, Nandewar, Brigalow Belt South, Sydney Basin, South Eastern Highla This includes PCT's: 74, 75, 83, 250, 266, 267, 268, 270, 274, 275, 276, 277, 278, 279, 280, 281, 282, 283, 284, 286, 298, 302, 312, 341, 342, 347, 350, 352, 356, 367, 381, 382, 395, 401, 403, 421, 433, 434, 435, 436, 437, 451, 483, 484, 488, 492, 496, 508, 509, 510, 511, 528, 538, 544, 563, 567, 571, 589, 590, 597, 599, 618, 619, 622, 633, 654, 702, 703, 704, 705, 710, 711, 796, 797, 799, 840, 847, 851, 921, 1099,</p>		<p>277_DerivedGr assland_low</p>	<p>No</p>		<p>0 Orange, Bathurst, Crookwell, Hill End, Inland Slopes and Oberon. or Any IBRA subregion that is within 100 kilometers of the outer edge of the impacted site.</p>
--	--	--	--------------------------------------	-----------	--	---

BAM Biodiversity Credit Report (Like for like)

	1103, 1303, 1304, 1307, 1324, 1329, 1330, 1331, 1332, 1333, 1334, 1383, 1401, 1512, 1606, 1608, 1611, 1691, 1693, 1695, 1698					
	White Box - Yellow Box - Blakely's Red Gum Grassy Woodland and Derived Native Grassland in the NSW North Coast, New England Tableland, Nandewar, Brigalow Belt South, Sydney Basin, South Eastern Highla This includes PCT's: 74, 75, 83, 250, 266, 267, 268, 270, 274, 275, 276, 277, 278, 279, 280, 281, 282, 283, 284, 286, 298, 302, 312, 341, 342, 347, 350, 352, 356, 367, 381, 382, 395, 401, 403, 421, 433, 434, 435, 436, 437, 451, 483, 484, 488, 492, 496, 508, 509, 510, 511,		277_moderate	No	335	Orange, Bathurst, Crookwell, Hill End, Inland Slopes and Oberon. or Any IBRA subregion that is within 100 kilometers of the outer edge of the impacted site.



BAM Biodiversity Credit Report (Like for like)

	<p>528, 538, 544, 563, 567, 571, 589, 590, 597, 599, 618, 619, 622, 633, 654, 702, 703, 704, 705, 710, 711, 796, 797, 799, 840, 847, 851, 921, 1099, 1103, 1303, 1304, 1307, 1324, 1329, 1330, 1331, 1332, 1333, 1334, 1383, 1401, 1512, 1606, 1608, 1611, 1691, 1693, 1695, 1698</p>					
	<p>White Box - Yellow Box - Blakely's Red Gum Grassy Woodland and Derived Native Grassland in the NSW North Coast, New England Tableland, Nandewar, Brigalow Belt South, Sydney Basin, South Eastern Highla This includes PCT's: 74, 75, 83, 250, 266, 267, 268, 270, 274, 275, 276, 277, 278, 279, 280, 281, 282, 283, 284, 286, 298,</p>	-	277_Planted	No	1	<p>Orange, Bathurst, Crookwell, Hill End, Inland Slopes and Oberon. or Any IBRA subregion that is within 100 kilometers of the outer edge of the impacted site.</p>



BAM Biodiversity Credit Report (Like for like)

	<p>302, 312, 341, 342, 347, 350, 352, 356, 367, 381, 382, 395, 401, 403, 421, 433, 434, 435, 436, 437, 451, 483, 484, 488, 492, 496, 508, 509, 510, 511, 528, 538, 544, 563, 567, 571, 589, 590, 597, 599, 618, 619, 622, 633, 654, 702, 703, 704, 705, 710, 711, 796, 797, 799, 840, 847, 851, 921, 1099, 1103, 1303, 1304, 1307, 1324, 1329, 1330, 1331, 1332, 1333, 1334, 1383, 1401, 1512, 1606, 1608, 1611, 1691, 1693, 1695, 1698</p>				
	<p>White Box - Yellow Box - Blakely's Red Gum Grassy Woodland and Derived Native Grassland in the NSW North Coast, New England Tableland, Nandewar, Brigalow Belt South, Sydney Basin,</p>		<p>277_Planted_Roadsid</p>	<p>No</p>	<p>0 Orange, Bathurst, Crookwell, Hill End, Inland Slopes and Oberon. or Any IBRA subregion that is within 100 kilometers of the outer edge of the impacted site.</p>



BAM Biodiversity Credit Report (Like for like)

	<p>South Eastern Highla This includes PCT's: 74, 75, 83, 250, 266, 267, 268, 270, 274, 275, 276, 277, 278, 279, 280, 281, 282, 283, 284, 286, 298, 302, 312, 341, 342, 347, 350, 352, 356, 367, 381, 382, 395, 401, 403, 421, 433, 434, 435, 436, 437, 451, 483, 484, 488, 492, 496, 508, 509, 510, 511, 528, 538, 544, 563, 567, 571, 589, 590, 597, 599, 618, 619, 622, 633, 654, 702, 703, 704, 705, 710, 711, 796, 797, 799, 840, 847, 851, 921, 1099, 1103, 1303, 1304, 1307, 1324, 1329, 1330, 1331, 1332, 1333, 1334, 1383, 1401, 1512, 1606, 1608, 1611, 1691, 1693, 1695, 1698</p>					
--	---	--	--	--	--	--

BAM Biodiversity Credit Report (Like for like)

278-Riparian Blakely's Red Gum - box - shrub - sedge - grass tall open forest of the central NSW South Western Slopes Bioregion	Like-for-like credit retirement options					
	Name of offset trading group	Trading group	Zone	HBT	Credits	IBRA region
	White Box - Yellow Box - Blakely's Red Gum Grassy Woodland and Derived Native Grassland in the NSW North Coast, New England Tableland, Nandewar, Brigalow Belt South, Sydney Basin, South Eastern Highla This includes PCT's: 74, 75, 83, 250, 266, 267, 268, 270, 274, 275, 276, 277, 278, 279, 280, 281, 282, 283, 284, 286, 298, 302, 312, 341, 342, 347, 350, 352, 356, 367, 381, 382, 395, 401, 403, 421, 433, 434, 435, 436, 437, 451, 483, 484, 488, 492, 496, 508, 509, 510, 511, 528, 538, 544, 563, 567, 571, 589, 590, 597, 599, 618, 619, 622, 633, 654,	-	278_Moderate_Condition	No	22	Orange, Bathurst, Crookwell, Hill End, Inland Slopes and Oberon. or Any IBRA subregion that is within 100 kilometers of the outer edge of the impacted site.



BAM Biodiversity Credit Report (Like for like)

	702, 703, 704, 705, 710, 711, 796, 797, 799, 840, 847, 851, 921, 1099, 1103, 1303, 1304, 1307, 1324, 1329, 1330, 1331, 1332, 1333, 1334, 1383, 1401, 1512, 1606, 1608, 1611, 1691, 1693, 1695, 1698					
766-Carex sedgeland of the slopes and tablelands	Like-for-like credit retirement options					
	Class	Trading group	Zone	HBT	Credits	IBRA region
	Montane Bogs and Fens This includes PCT's: 765, 766, 1229, 1256	Montane Bogs and Fens >=70% and <90%	766_Moderate_Condition	No	3	Orange, Bathurst, Crookwell, Hill End, Inland Slopes and Oberon. or Any IBRA subregion that is within 100 kilometers of the outer edge of the impacted site.
1330-Yellow Box - Blakely's Red Gum grassy woodland on the tablelands, South Eastern Highlands Bioregion	Like-for-like credit retirement options					
	Class	Trading group	Zone	HBT	Credits	IBRA region

BAM Biodiversity Credit Report (Like for like)

	Southern Tableland Grassy Woodlands This includes PCT's: 303, 312, 654, 680, 705, 1330, 1334, 1501	Southern Tableland Grassy Woodlands > =90%	1330_Derived_Grassland	No		8 Orange, Bathurst, Crookwell, Hill End, Inland Slopes and Oberon. or Any IBRA subregion that is within 100 kilometers of the outer edge of the impacted site.
1330-Yellow Box - Blakely's Red Gum grassy woodland on the tablelands, South Eastern Highlands Bioregion						
Like-for-like credit retirement options						
	Name of offset trading group	Trading group	Zone	HBT	Credits	IBRA region
	White Box - Yellow Box - Blakely's Red Gum Grassy Woodland and Derived Native Grassland in the NSW North Coast, New England Tableland, Nandewar, Brigalow Belt South, Sydney Basin, South Eastern Highla This includes PCT's: 74, 75, 83, 250, 266, 267, 268, 270, 274, 275, 276, 277, 278, 279, 280, 281,	-	1330_Poor_Con diiton	Yes	17	Orange, Bathurst, Crookwell, Hill End, Inland Slopes and Oberon. or Any IBRA subregion that is within 100 kilometers of the outer edge of the impacted site.



BAM Biodiversity Credit Report (Like for like)

	<p>282, 283, 284, 286, 298, 302, 312, 341, 342, 347, 350, 352, 356, 367, 381, 382, 395, 401, 403, 421, 433, 434, 435, 436, 437, 451, 483, 484, 488, 492, 496, 508, 509, 510, 511, 528, 538, 544, 563, 567, 571, 589, 590, 597, 599, 618, 619, 622, 633, 654, 702, 703, 704, 705, 710, 711, 796, 797, 799, 840, 847, 851, 921, 1099, 1103, 1303, 1304, 1307, 1324, 1329, 1330, 1331, 1332, 1333, 1334, 1383, 1401, 1512, 1606, 1608, 1611, 1691, 1693, 1695, 1698</p>					
	<p>White Box - Yellow Box - Blakely's Red Gum Grassy Woodland and Derived Native Grassland in the NSW North Coast, New England Tableland, Nandewar, Brigalow Belt</p>		<p>1330_Moderate _Condition</p>	<p>Yes</p>	<p>51</p>	<p>Orange, Bathurst, Crookwell, Hill End, Inland Slopes and Oberon. or Any IBRA subregion that is within 100 kilometers of the outer edge of the impacted site.</p>



BAM Biodiversity Credit Report (Like for like)

	<p>South, Sydney Basin, South Eastern Highla This includes PCT's: 74, 75, 83, 250, 266, 267, 268, 270, 274, 275, 276, 277, 278, 279, 280, 281, 282, 283, 284, 286, 298, 302, 312, 341, 342, 347, 350, 352, 356, 367, 381, 382, 395, 401, 403, 421, 433, 434, 435, 436, 437, 451, 483, 484, 488, 492, 496, 508, 509, 510, 511, 528, 538, 544, 563, 567, 571, 589, 590, 597, 599, 618, 619, 622, 633, 654, 702, 703, 704, 705, 710, 711, 796, 797, 799, 840, 847, 851, 921, 1099, 1103, 1303, 1304, 1307, 1324, 1329, 1330, 1331, 1332, 1333, 1334, 1383, 1401, 1512, 1606, 1608, 1611, 1691, 1693, 1695, 1698</p>					
--	--	--	--	--	--	--

Species Credit Summary

Assessment Id

00016900/BAAS18074/19/00016901

Proposal Name

Flyers Creek Wind Farm

BAM Biodiversity Credit Report (Like for like)

Species	Vegetation Zone/s	Area / Count	Credits
Petaurus norfolcensis / Squirrel Glider	1330_Derived_Grassland, 1330_Poor_Condiiton, 1330_Moderate_Condition, 268_Moderate_Condition, 278_Moderate_Condition, 277_moderate	11.1	204.00
Polytelis swainsonii / Superb Parrot	1330_Moderate_Condition, 268_Moderate_Condition, 278_Moderate_Condition, 277_moderate	22.5	348.00

Credit Retirement Options

Like-for-like credit retirement options

Petaurus norfolcensis / Squirrel Glider	Spp	IBRA subregion
	Petaurus norfolcensis / Squirrel Glider	Any in NSW
Polytelis swainsonii / Superb Parrot	Spp	IBRA subregion
	Polytelis swainsonii / Superb Parrot	Any in NSW

Proposal Details

Assessment Id	Proposal Name	BAM data last updated *
00016900/BAAS18074/19/00016901	Flyers Creek Wind Farm	10/06/2021
Assessor Name	Report Created	BAM Data version *
	19/10/2021	45
Assessor Number	BAM Case Status	Date Finalised
	Finalised	19/10/2021
Assessment Revision	Assessment Type	
1	Part 5 Activities	

* Disclaimer: BAM data last updated may indicate either complete or partial update of the BAM calculator database. BAM calculator database may not be completely aligned with Bionet.

Ecosystem credits for plant communities types (PCT), ecological communities & threatened species habitat

Zone	Vegetation zone name	TEC name	Current Vegetation integrity score	Change in Vegetation integrity (loss / gain)	Area (ha)	BC Act Listing status	EPBC Act listing status	Species sensitivity to gain class (for BRW)	Biodiversity risk weighting	Potential SAI	Ecosystem credits
------	----------------------	----------	------------------------------------	--	-----------	-----------------------	-------------------------	---	-----------------------------	---------------	-------------------

Blakely's Red Gum - Yellow Box grassy tall woodland of the NSW South Western Slopes Bioregion

7	277_DerivedGrassland Good	White Box - Yellow Box - Blakely's Red Gum Grassy Woodland and Derived Native Grassland in the NSW North Coast, New England Tableland, Nandewar, Brigalow Belt South, Sydney Basin, South Eastern Highla	42.6	42.6	0.1	Critically Endangered Ecological Community	Critically Endangered	High Sensitivity to Potential Gain	2.50	TRUE	3
---	---------------------------	--	------	------	-----	--	-----------------------	------------------------------------	------	------	---

8	277_DerivedGrassland_low	White Box - Yellow Box - Blakely's Red Gum Grassy Woodland and Derived Native Grassland in the NSW North Coast, New England Tableland, Nandewar, Brigalow Belt South, Sydney Basin, South Eastern Highla	12.8	12.8	4	Critically Endangered Ecological Community	Critically Endangered	High Sensitivity to Potential Gain	2.50	TRUE	0
---	--------------------------	--	------	------	---	--	-----------------------	------------------------------------	------	------	---

9	277_moderate	White Box - Yellow Box - Blakely's Red Gum Grassy Woodland and Derived Native Grassland in the NSW North Coast, New England Tableland, Nandewar, Brigalow Belt South, Sydney Basin, South Eastern Highla	28.5	28.5	18.8	Critically Endangered Ecological Community	Critically Endangered	High Sensitivity to Potential Gain	2.50	TRUE	335
---	--------------	--	------	------	------	--	-----------------------	------------------------------------	------	------	-----

BAM Credit Summary Report

10	277_Planted	White Box - Yellow Box - Blakely's Red Gum Grassy Woodland and Derived Native Grassland in the NSW North Coast, New England Tableland, Nandewar, Brigalow Belt South, Sydney Basin, South Eastern Highla	47.2	47.2	0.04	Critically Endangered Ecological Community	Critically Endangered	High Sensitivity to Potential Gain	2.50	TRUE	1
----	-------------	--	------	------	------	--	-----------------------	------------------------------------	------	------	---

11	277_Planted_Roadside	White Box - Yellow Box - Blakely's Red Gum Grassy Woodland and Derived Native Grassland in the NSW North Coast, New England Tableland, Nandewar, Brigalow Belt South, Sydney Basin, South Eastern Highla	5.7	5.7	0.04	Critically Endangered Ecological Community	Critically Endangered	High Sensitivity to Potential Gain	2.50	TRUE	0
										Subtotal	339
Carex sedgeland of the slopes and tablelands											
13	766_Moderate_Condition	Not a TEC	33.8	33.8	0.17			High Sensitivity to Potential Gain	2.00		3
										Subtotal	3

Riparian Blakely's Red Gum - box - shrub - sedge - grass tall open forest of the central NSW South Western Slopes Bioregion											
12	278_Moderate_Condition	White Box - Yellow Box - Blakely's Red Gum Grassy Woodland and Derived Native Grassland in the NSW North Coast, New England Tableland, Nandewar, Brigalow Belt South, Sydney Basin, South Eastern Highla	69.7	69.7	0.51	Critically Endangered Ecological Community	Critically Endangered	High Sensitivity to Potential Gain	2.50	TRUE	22
										Subtotal	22
White Box - Blakely's Red Gum - Long-leaved Box - Nortons Box - Red Stringybark grass-shrub woodland on shallow soils on hills in the NSW South Western Slopes Bioregion											
5	268_Derived_Grassland	Not a TEC	4.9	4.9	2.5			High Sensitivity to Potential Gain	1.75		0
6	268_Moderate_Condition	Not a TEC	58.8	58.8	1.9			High Sensitivity to Potential Gain	1.75		49
										Subtotal	49

White Box grassy woodland in the upper slopes sub-region of the NSW South Western Slopes Bioregion

4	266_Poor_Condition	White Box - Yellow Box - Blakely's Red Gum Grassy Woodland and Derived Native Grassland in the NSW North Coast, New England Tableland, Nandewar, Brigalow Belt South, Sydney Basin, South Eastern Highla	12.3	12.3	0.52	Critically Endangered Ecological Community	Critically Endangered	High Sensitivity to Potential Gain	2.50	TRUE	0
										Subtotal	0

Yellow Box - Blakely's Red Gum grassy woodland on the tablelands, South Eastern Highlands Bioregion

1	1330_Derived_Grassland	Not a TEC	29.6	29.6	0.45			High Sensitivity to Potential Gain	2.50		8
										Subtotal	8

Yellow Box - Blakely's Red Gum grassy woodland on the tablelands, South Eastern Highlands Bioregion

2	1330_Poor_ Condiiton	White Box - Yellow Box - Blakely's Red Gum Grassy Woodland and Derived Native Grassland in the NSW North Coast, New England Tableland, Nandewar, Brigalow Belt South, Sydney Basin, South Eastern Highla	39	39.0	0.69	Critically Endangered Ecological Community	Critically Endangered	High Sensitivity to Potential Gain	2.50	TRUE	17
---	----------------------	--	----	------	------	--	-----------------------	------------------------------------	------	------	----

3	1330_Moderate_Condition	White Box - Yellow Box - Blakely's Red Gum Grassy Woodland and Derived Native Grassland in the NSW North Coast, New England Tableland, Nandewar, Brigalow Belt South, Sydney Basin, South Eastern Highla	64.8	64.8	1.3	Critically Endangered Ecological Community	Critically Endangered	High Sensitivity to Potential Gain	2.50	TRUE	51
										Subtotal	68
										Total	489

Species credits for threatened species

Vegetation zone name	Habitat condition (Vegetation Integrity)	Change in habitat condition	Area (ha)/Count (no. individuals)	BC Act Listing status	EPBC Act listing status	Biodiversity risk weighting	Potential SAI	Species credits
<i>Petaurus norfolcensis</i> / Squirrel Glider (Fauna)								
1330_Derived_Grassland	29.6	29.6	0.45	Vulnerable	Not Listed	2	False	7
1330_Poor_Condition	39.0	39.0	0.69	Vulnerable	Not Listed	2	False	13

BAM Credit Summary Report

1330_Moderate_Condition	64.8	64.8	1.3	Vulnerable	Not Listed	2	False	41
268_Moderate_Condition	58.8	58.8	1.9	Vulnerable	Not Listed	2	False	56
278_Moderate_Condition	69.7	69.7	0.51	Vulnerable	Not Listed	2	False	18
277_moderate	28.5	28.5	6.3	Vulnerable	Not Listed	2	False	90
							Subtotal	225
<i>Polytelis swainsonii / Superb Parrot (Fauna)</i>								
1330_Moderate_Condition	64.8	64.8	1.3	Vulnerable	Vulnerable	2	False	41
268_Moderate_Condition	58.8	58.8	1.9	Vulnerable	Vulnerable	2	False	56
278_Moderate_Condition	69.7	69.7	0.51	Vulnerable	Vulnerable	2	False	18
277_moderate	28.5	28.5	18.8	Vulnerable	Vulnerable	2	False	268
							Subtotal	383

Proposal Details

Assessment Id	Proposal Name	BAM data last updated *
00016900/BAAS18074/21/00027888	Flyers Creek Offsets	10/06/2021
Assessor Name	Report Created	BAM Data version *
	15/10/2021	45
Assessor Number	BAM Case Status	Date Finalised
	Finalised	27/09/2021
Assessment Revision	Assessment Type	BOS entry trigger
0	Scattered Trees	Major Project

* Disclaimer: BAM data last updated may indicate either complete or partial update of the BAM calculator database. BAM calculator database may not be completely aligned with Bionet.

Scattered Trees Credit Requirement

Class	Contains hollows	Number of trees	Ecosystem credits
277-Blakely's Red Gum - Yellow Box grassy tall woodland of the NSW South Western Slopes Bioregion			
2	False	3.0	2
2	False	3.0	2
3	False	1.0	1
3	False	14.0	11
3	False	1.0	1
3	True	9.0	9
3	True	2.0	2
3	True	1.0	1
3	True	2.0	2
3	False	3.0	2
			33
268-White Box - Blakely's Red Gum - Long-leaved Box - Nortons Box - Red Stringybark grass-shrub woodland on shallow soils on hills in the NSW South Western Slopes Bioregion			
3	False	1.0	1
3	False	1.0	1
3	False	1.0	1
3	True	3.0	3

BAM Credit Summary Report

3	False	1.0	1
			7
266-White Box grassy woodland in the upper slopes sub-region of the NSW South Western Slopes Bioregion			
3	False	1.0	1
3	True	1.0	1
2	False	1.0	1
3	False	4.0	3
			6
			46

Species credits for threatened species

The scattered tree module is not applicable. This species must be assessed using chapter 5 of the BAM and BAM-C development module

<p><i>Lathamus discolor</i> Swift Parrot</p>

BAM Biodiversity Credit Report (Like for like)

Proposal Details

Assessment Id	Proposal Name	BAM data last updated *
00016900/BAAS18074/19/00016901	Flyers Creek Wind Farm	10/06/2021
Assessor Name	Assessor Number	BAM Data version *
		45
Proponent Names	Report Created	BAM Case Status
	15/10/2021	Finalised
Assessment Revision	Assessment Type	Date Finalised
1	Part 5 Activities	15/10/2021

* Disclaimer: BAM data last updated may indicate either complete or partial update of the BAM calculator database. BAM calculator database may not be completely aligned with Bionet.

Potential Serious and Irreversible Impacts

Name of threatened ecological community	Listing status	Name of Plant Community Type/ID
White Box - Yellow Box - Blakely's Red Gum Grassy Woodland and Derived Native Grassland in the NSW North Coast, New England Tableland, Nandewar, Brigalow Belt South, Sydney Basin, South Eastern Highla	Critically Endangered Ecological Community	1330-Yellow Box - Blakely's Red Gum grassy woodland on the tablelands, South Eastern Highlands Bioregion

BAM Biodiversity Credit Report (Like for like)

White Box - Yellow Box - Blakely's Red Gum Grassy Woodland and Derived Native Grassland in the NSW North Coast, New England Tableland, Nandewar, Brigalow Belt South, Sydney Basin, South Eastern Highla	Critically Endangered Ecological Community	266-White Box grassy woodland in the upper slopes sub-region of the NSW South Western Slopes Bioregion
White Box - Yellow Box - Blakely's Red Gum Grassy Woodland and Derived Native Grassland in the NSW North Coast, New England Tableland, Nandewar, Brigalow Belt South, Sydney Basin, South Eastern Highla	Critically Endangered Ecological Community	277-Blakely's Red Gum - Yellow Box grassy tall woodland of the NSW South Western Slopes Bioregion
White Box - Yellow Box - Blakely's Red Gum Grassy Woodland and Derived Native Grassland in the NSW North Coast, New England Tableland, Nandewar, Brigalow Belt South, Sydney Basin, South Eastern Highla	Critically Endangered Ecological Community	278-Riparian Blakely's Red Gum - box - shrub - sedge - grass tall open forest of the central NSW South Western Slopes Bioregion

Species

Nil

Additional Information for Approval

PCTs With Customized Benchmarks

PCT

No Changes

Predicted Threatened Species Not On Site

BAM Biodiversity Credit Report (Like for like)

Name

No Changes

Ecosystem Credit Summary (Number and class of biodiversity credits to be retired)

Name of Plant Community Type/ID	Name of threatened ecological community	Area of impact	HBT Cr	No HBT Cr	Total credits to be retired
1330-Yellow Box - Blakely's Red Gum grassy woodland on the tablelands, South Eastern Highlands Bioregion	Not a TEC	0.5	0	8	8
1330-Yellow Box - Blakely's Red Gum grassy woodland on the tablelands, South Eastern Highlands Bioregion	White Box - Yellow Box - Blakely's Red Gum Grassy Woodland and Derived Native Grassland in the NSW North Coast, New England Tableland, Nandewar, Brigalow Belt South, Sydney Basin, South Eastern Highla	2.0	68	0	68
266-White Box grassy woodland in the upper slopes sub-region of the NSW South Western Slopes Bioregion	White Box - Yellow Box - Blakely's Red Gum Grassy Woodland and Derived Native Grassland in the NSW North Coast, New England Tableland, Nandewar, Brigalow Belt South, Sydney Basin, South Eastern Highla	0.5	0	0	0
268-White Box - Blakely's Red Gum - Long-leaved Box - Nortons Box - Red Stringybark grass-shrub woodland on shallow soils on hills in the NSW South Western Slopes Bioregion	Not a TEC	4.4	0	49	49

BAM Biodiversity Credit Report (Like for like)

277-Blakely's Red Gum - Yellow Box grassy tall woodland of the NSW South Western Slopes Bioregion	White Box - Yellow Box - Blakely's Red Gum Grassy Woodland and Derived Native Grassland in the NSW North Coast, New England Tableland, Nandewar, Brigalow Belt South, Sydney Basin, South Eastern Highla	23.0	0	339	339
278-Riparian Blakely's Red Gum - box - shrub - sedge - grass tall open forest of the central NSW South Western Slopes Bioregion	White Box - Yellow Box - Blakely's Red Gum Grassy Woodland and Derived Native Grassland in the NSW North Coast, New England Tableland, Nandewar, Brigalow Belt South, Sydney Basin, South Eastern Highla	0.5	0	22	22
766-Carex sedgeland of the slopes and tablelands	Not a TEC	0.2	0	3	3

266-White Box grassy woodland in the upper slopes sub-region of the NSW South Western Slopes Bioregion	Like-for-like credit retirement options					
	Name of offset trading group	Trading group	Zone	HBT	Credits	IBRA region
	White Box - Yellow Box - Blakely's Red Gum Grassy Woodland and Derived Native Grassland in the NSW North Coast, New England Tableland, Nandewar, Brigalow Belt South, Sydney Basin, South Eastern Highla This includes PCT's:	-	266_Poor_Condition	Yes	0	Orange, Bathurst, Crookwell, Hill End, Inland Slopes and Oberon. or Any IBRA subregion that is within 100 kilometers of the outer edge of the impacted site.



BAM Biodiversity Credit Report (Like for like)

74, 75, 83, 250, 266, 267, 268, 270, 274, 275, 276, 277, 278, 279, 280, 281, 282, 283, 284, 286, 298, 302, 312, 341, 342, 347, 350, 352, 356, 367, 381, 382, 395, 401, 403, 421, 433, 434, 435, 436, 437, 451, 483, 484, 488, 492, 496, 508, 509, 510, 511, 528, 538, 544, 563, 567, 571, 589, 590, 597, 599, 618, 619, 622, 633, 654, 702, 703, 704, 705, 710, 711, 796, 797, 799, 840, 847, 851, 921, 1099, 1103, 1303, 1304, 1307, 1324, 1329, 1330, 1331, 1332, 1333, 1334, 1383, 1401, 1512, 1606, 1608, 1611, 1691, 1693, 1695, 1698					
---	--	--	--	--	--



BAM Biodiversity Credit Report (Like for like)

268-White Box - Blakely's Red Gum - Long-leaved Box - Nortons Box - Red Stringybark grass-shrub woodland on shallow soils on hills in the NSW South Western Slopes Bioregion	Like-for-like credit retirement options					
	Class	Trading group	Zone	HBT	Credits	IBRA region
	Western Slopes Grassy Woodlands This includes PCT's: 201, 202, 266, 267, 268, 272, 274, 275, 276, 277, 278, 279, 280, 281, 282, 283, 284, 286, 301, 316, 326, 337, 347, 383, 421, 426, 433, 434, 437, 441, 444, 461, 483, 509, 516, 544, 589, 590, 593, 599, 847, 955, 1303, 1304, 1315, 1329, 1383, 1401, 1609, 1693, 1695	Western Slopes Grassy Woodlands >=50% and <70%	268_Derived_Grassland	No	0	Orange, Bathurst, Crookwell, Hill End, Inland Slopes and Oberon. or Any IBRA subregion that is within 100 kilometers of the outer edge of the impacted site.

BAM Biodiversity Credit Report (Like for like)

	Western Slopes Grassy Woodlands This includes PCT's: 201, 202, 266, 267, 268, 272, 274, 275, 276, 277, 278, 279, 280, 281, 282, 283, 284, 286, 301, 316, 326, 337, 347, 383, 421, 426, 433, 434, 437, 441, 444, 461, 483, 509, 516, 544, 589, 590, 593, 599, 847, 955, 1303, 1304, 1315, 1329, 1383, 1401, 1609, 1693, 1695	Western Slopes Grassy Woodlands >=50% and <70%	268_Moderate_Condition	No	49	Orange, Bathurst, Crookwell, Hill End, Inland Slopes and Oberon. or Any IBRA subregion that is within 100 kilometers of the outer edge of the impacted site.
277-Blakely's Red Gum - Yellow Box grassy tall woodland of the NSW South Western Slopes Bioregion	Like-for-like credit retirement options					
	Name of offset trading group	Trading group	Zone	HBT	Credits	IBRA region
	White Box - Yellow Box - Blakely's Red Gum Grassy Woodland and Derived Native Grassland in the NSW North Coast, New	-	277_DerivedGrassland_mod	No	3	Orange, Bathurst, Crookwell, Hill End, Inland Slopes and Oberon. or Any IBRA subregion that is within 100 kilometers of the outer edge of the impacted site.



BAM Biodiversity Credit Report (Like for like)

	<p>England Tableland, Nandewar, Brigalow Belt South, Sydney Basin, South Eastern Highla This includes PCT's: 74, 75, 83, 250, 266, 267, 268, 270, 274, 275, 276, 277, 278, 279, 280, 281, 282, 283, 284, 286, 298, 302, 312, 341, 342, 347, 350, 352, 356, 367, 381, 382, 395, 401, 403, 421, 433, 434, 435, 436, 437, 451, 483, 484, 488, 492, 496, 508, 509, 510, 511, 528, 538, 544, 563, 567, 571, 589, 590, 597, 599, 618, 619, 622, 633, 654, 702, 703, 704, 705, 710, 711, 796, 797, 799, 840, 847, 851, 921, 1099, 1103, 1303, 1304, 1307, 1324, 1329, 1330, 1331, 1332, 1333, 1334, 1383, 1401, 1512, 1606, 1608, 1611, 1691, 1693, 1695, 1698</p>					
--	---	--	--	--	--	--

BAM Biodiversity Credit Report (Like for like)

	<p>White Box - Yellow Box - Blakely's Red Gum Grassy Woodland and Derived Native Grassland in the NSW North Coast, New England Tableland, Nandewar, Brigalow Belt South, Sydney Basin, South Eastern Highla This includes PCT's: 74, 75, 83, 250, 266, 267, 268, 270, 274, 275, 276, 277, 278, 279, 280, 281, 282, 283, 284, 286, 298, 302, 312, 341, 342, 347, 350, 352, 356, 367, 381, 382, 395, 401, 403, 421, 433, 434, 435, 436, 437, 451, 483, 484, 488, 492, 496, 508, 509, 510, 511, 528, 538, 544, 563, 567, 571, 589, 590, 597, 599, 618, 619, 622, 633, 654, 702, 703, 704, 705, 710, 711, 796, 797, 799, 840, 847, 851, 921, 1099,</p>		<p>277_DerivedGr assland_low</p>	<p>No</p>		<p>0 Orange, Bathurst, Crookwell, Hill End, Inland Slopes and Oberon. or Any IBRA subregion that is within 100 kilometers of the outer edge of the impacted site.</p>
--	--	--	--------------------------------------	-----------	--	---

BAM Biodiversity Credit Report (Like for like)

	1103, 1303, 1304, 1307, 1324, 1329, 1330, 1331, 1332, 1333, 1334, 1383, 1401, 1512, 1606, 1608, 1611, 1691, 1693, 1695, 1698					
	White Box - Yellow Box - Blakely's Red Gum Grassy Woodland and Derived Native Grassland in the NSW North Coast, New England Tableland, Nandewar, Brigalow Belt South, Sydney Basin, South Eastern Highla This includes PCT's: 74, 75, 83, 250, 266, 267, 268, 270, 274, 275, 276, 277, 278, 279, 280, 281, 282, 283, 284, 286, 298, 302, 312, 341, 342, 347, 350, 352, 356, 367, 381, 382, 395, 401, 403, 421, 433, 434, 435, 436, 437, 451, 483, 484, 488, 492, 496, 508, 509, 510, 511,		277_moderate	No	335	Orange, Bathurst, Crookwell, Hill End, Inland Slopes and Oberon. or Any IBRA subregion that is within 100 kilometers of the outer edge of the impacted site.

BAM Biodiversity Credit Report (Like for like)

	<p>528, 538, 544, 563, 567, 571, 589, 590, 597, 599, 618, 619, 622, 633, 654, 702, 703, 704, 705, 710, 711, 796, 797, 799, 840, 847, 851, 921, 1099, 1103, 1303, 1304, 1307, 1324, 1329, 1330, 1331, 1332, 1333, 1334, 1383, 1401, 1512, 1606, 1608, 1611, 1691, 1693, 1695, 1698</p>					
	<p>White Box - Yellow Box - Blakely's Red Gum Grassy Woodland and Derived Native Grassland in the NSW North Coast, New England Tableland, Nandewar, Brigalow Belt South, Sydney Basin, South Eastern Highla This includes PCT's: 74, 75, 83, 250, 266, 267, 268, 270, 274, 275, 276, 277, 278, 279, 280, 281, 282, 283, 284, 286, 298,</p>	-	277_Planted	No	1	<p>Orange, Bathurst, Crookwell, Hill End, Inland Slopes and Oberon. or Any IBRA subregion that is within 100 kilometers of the outer edge of the impacted site.</p>

BAM Biodiversity Credit Report (Like for like)

	<p>302, 312, 341, 342, 347, 350, 352, 356, 367, 381, 382, 395, 401, 403, 421, 433, 434, 435, 436, 437, 451, 483, 484, 488, 492, 496, 508, 509, 510, 511, 528, 538, 544, 563, 567, 571, 589, 590, 597, 599, 618, 619, 622, 633, 654, 702, 703, 704, 705, 710, 711, 796, 797, 799, 840, 847, 851, 921, 1099, 1103, 1303, 1304, 1307, 1324, 1329, 1330, 1331, 1332, 1333, 1334, 1383, 1401, 1512, 1606, 1608, 1611, 1691, 1693, 1695, 1698</p>				
	<p>White Box - Yellow Box - Blakely's Red Gum Grassy Woodland and Derived Native Grassland in the NSW North Coast, New England Tableland, Nandewar, Brigalow Belt South, Sydney Basin,</p>		<p>277_Planted_Roadsid</p>	<p>No</p>	<p>0 Orange, Bathurst, Crookwell, Hill End, Inland Slopes and Oberon. or Any IBRA subregion that is within 100 kilometers of the outer edge of the impacted site.</p>



BAM Biodiversity Credit Report (Like for like)

	<p>South Eastern Highla This includes PCT's: 74, 75, 83, 250, 266, 267, 268, 270, 274, 275, 276, 277, 278, 279, 280, 281, 282, 283, 284, 286, 298, 302, 312, 341, 342, 347, 350, 352, 356, 367, 381, 382, 395, 401, 403, 421, 433, 434, 435, 436, 437, 451, 483, 484, 488, 492, 496, 508, 509, 510, 511, 528, 538, 544, 563, 567, 571, 589, 590, 597, 599, 618, 619, 622, 633, 654, 702, 703, 704, 705, 710, 711, 796, 797, 799, 840, 847, 851, 921, 1099, 1103, 1303, 1304, 1307, 1324, 1329, 1330, 1331, 1332, 1333, 1334, 1383, 1401, 1512, 1606, 1608, 1611, 1691, 1693, 1695, 1698</p>					
--	---	--	--	--	--	--

BAM Biodiversity Credit Report (Like for like)

278-Riparian Blakely's Red Gum - box - shrub - sedge - grass tall open forest of the central NSW South Western Slopes Bioregion	Like-for-like credit retirement options					
	Name of offset trading group	Trading group	Zone	HBT	Credits	IBRA region
	White Box - Yellow Box - Blakely's Red Gum Grassy Woodland and Derived Native Grassland in the NSW North Coast, New England Tableland, Nandewar, Brigalow Belt South, Sydney Basin, South Eastern Highla This includes PCT's: 74, 75, 83, 250, 266, 267, 268, 270, 274, 275, 276, 277, 278, 279, 280, 281, 282, 283, 284, 286, 298, 302, 312, 341, 342, 347, 350, 352, 356, 367, 381, 382, 395, 401, 403, 421, 433, 434, 435, 436, 437, 451, 483, 484, 488, 492, 496, 508, 509, 510, 511, 528, 538, 544, 563, 567, 571, 589, 590, 597, 599, 618, 619, 622, 633, 654,	-	278_Moderate_Condition	No	22	Orange, Bathurst, Crookwell, Hill End, Inland Slopes and Oberon. or Any IBRA subregion that is within 100 kilometers of the outer edge of the impacted site.

BAM Biodiversity Credit Report (Like for like)

	702, 703, 704, 705, 710, 711, 796, 797, 799, 840, 847, 851, 921, 1099, 1103, 1303, 1304, 1307, 1324, 1329, 1330, 1331, 1332, 1333, 1334, 1383, 1401, 1512, 1606, 1608, 1611, 1691, 1693, 1695, 1698					
766-Carex sedgeland of the slopes and tablelands	Like-for-like credit retirement options					
	Class	Trading group	Zone	HBT	Credits	IBRA region
	Montane Bogs and Fens This includes PCT's: 765, 766, 1229, 1256	Montane Bogs and Fens >=70% and <90%	766_Moderate_Condition	No	3	Orange, Bathurst, Crookwell, Hill End, Inland Slopes and Oberon. or Any IBRA subregion that is within 100 kilometers of the outer edge of the impacted site.
1330-Yellow Box - Blakely's Red Gum grassy woodland on the tablelands, South Eastern Highlands Bioregion	Like-for-like credit retirement options					
	Class	Trading group	Zone	HBT	Credits	IBRA region

BAM Biodiversity Credit Report (Like for like)

	Southern Tableland Grassy Woodlands This includes PCT's: 303, 312, 654, 680, 705, 1330, 1334, 1501	Southern Tableland Grassy Woodlands > =90%	1330_Derived_Grassland	No		8 Orange, Bathurst, Crookwell, Hill End, Inland Slopes and Oberon. or Any IBRA subregion that is within 100 kilometers of the outer edge of the impacted site.
1330-Yellow Box - Blakely's Red Gum grassy woodland on the tablelands, South Eastern Highlands Bioregion						
Like-for-like credit retirement options						
	Name of offset trading group	Trading group	Zone	HBT	Credits	IBRA region
	White Box - Yellow Box - Blakely's Red Gum Grassy Woodland and Derived Native Grassland in the NSW North Coast, New England Tableland, Nandewar, Brigalow Belt South, Sydney Basin, South Eastern Highla This includes PCT's: 74, 75, 83, 250, 266, 267, 268, 270, 274, 275, 276, 277, 278, 279, 280, 281,	-	1330_Poor_Con diiton	Yes	17	Orange, Bathurst, Crookwell, Hill End, Inland Slopes and Oberon. or Any IBRA subregion that is within 100 kilometers of the outer edge of the impacted site.

BAM Biodiversity Credit Report (Like for like)

	<p>282, 283, 284, 286, 298, 302, 312, 341, 342, 347, 350, 352, 356, 367, 381, 382, 395, 401, 403, 421, 433, 434, 435, 436, 437, 451, 483, 484, 488, 492, 496, 508, 509, 510, 511, 528, 538, 544, 563, 567, 571, 589, 590, 597, 599, 618, 619, 622, 633, 654, 702, 703, 704, 705, 710, 711, 796, 797, 799, 840, 847, 851, 921, 1099, 1103, 1303, 1304, 1307, 1324, 1329, 1330, 1331, 1332, 1333, 1334, 1383, 1401, 1512, 1606, 1608, 1611, 1691, 1693, 1695, 1698</p>					
	<p>White Box - Yellow Box - Blakely's Red Gum Grassy Woodland and Derived Native Grassland in the NSW North Coast, New England Tableland, Nandewar, Brigalow Belt</p>		<p>1330_Moderate Condition</p>	<p>Yes</p>	<p>51</p>	<p>Orange, Bathurst, Crookwell, Hill End, Inland Slopes and Oberon. or Any IBRA subregion that is within 100 kilometers of the outer edge of the impacted site.</p>



BAM Biodiversity Credit Report (Like for like)

	<p>South, Sydney Basin, South Eastern Highla This includes PCT's: 74, 75, 83, 250, 266, 267, 268, 270, 274, 275, 276, 277, 278, 279, 280, 281, 282, 283, 284, 286, 298, 302, 312, 341, 342, 347, 350, 352, 356, 367, 381, 382, 395, 401, 403, 421, 433, 434, 435, 436, 437, 451, 483, 484, 488, 492, 496, 508, 509, 510, 511, 528, 538, 544, 563, 567, 571, 589, 590, 597, 599, 618, 619, 622, 633, 654, 702, 703, 704, 705, 710, 711, 796, 797, 799, 840, 847, 851, 921, 1099, 1103, 1303, 1304, 1307, 1324, 1329, 1330, 1331, 1332, 1333, 1334, 1383, 1401, 1512, 1606, 1608, 1611, 1691, 1693, 1695, 1698</p>					
--	--	--	--	--	--	--

Species Credit Summary

Assessment Id

00016900/BAAS18074/19/00016901

Proposal Name

Flyers Creek Wind Farm

BAM Biodiversity Credit Report (Like for like)

Species	Vegetation Zone/s	Area / Count	Credits
Petaurus norfolcensis / Squirrel Glider	1330_Derived_Grassland, 1330_Poor_Condiiton, 1330_Moderate_Condition, 268_Moderate_Condition, 278_Moderate_Condition, 277_moderate	11.1	204.00
Polytelis swainsonii / Superb Parrot	1330_Moderate_Condition, 268_Moderate_Condition, 278_Moderate_Condition, 277_moderate	22.5	348.00

Credit Retirement Options

Like-for-like credit retirement options

Petaurus norfolcensis / Squirrel Glider	Spp	IBRA subregion
	Petaurus norfolcensis / Squirrel Glider	Any in NSW
Polytelis swainsonii / Superb Parrot	Spp	IBRA subregion
	Polytelis swainsonii / Superb Parrot	Any in NSW