

Four Mile Creek WIND FARM PROSPECT



COMMUNITY UPDATE | OCTOBER 2024

Iberdrola Australia was **awarded an Investigation Permit** by Forestry Corporation of New South Wales (Forestry Corporation) in late May 2024 to **investigate a potential wind farm on Canobolas Forest softwood plantation** (Four Mile Creek Wind Farm). Iberdrola Australia is also exploring a potential wind farm within the Mullions Range State Forest softwood plantation.

Four Mile Creek Wind Farm (the Prospect) would be located approximately 15 kilometres south of Orange (NSW), on **Wiradjuri Country** and within Orange Local Aboriginal Land Council, **Cabonne Council and Orange City Council**.

The current investigation phase is likely to take 4 - 6 years.

Overview

Co-Locating Renewable Energy Projects in Pine Plantations

Pine Plantations are well suited to hosting renewable energy assets, like wind farms, because they:



Are located in windy areas - **providing a world class resource opportunity**



Offer large tracts of land for strings of turbines - **minimising connection infrastructure and maximising generation potential**

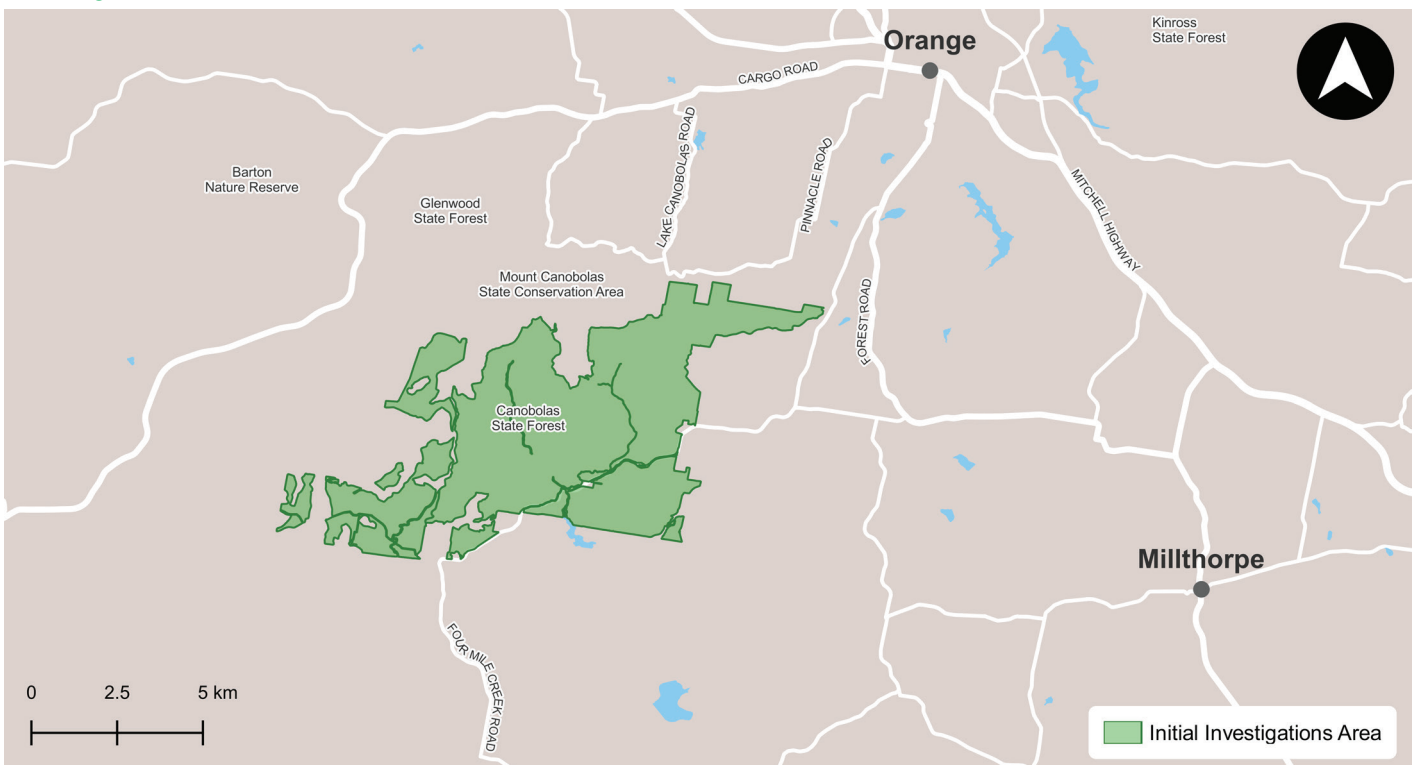


Are located away from residential areas - **minimising impacts on communities**



Have existing roads and transmission infrastructure - **minimising need for significant ground works and additional infrastructure**

Investigation Area



Community and stakeholder consultation

We started engaging with stakeholders and the community in June 2024 and have spoken to about 200 stakeholders and community members.

Our engagement to date has included:

- Meetings with Traditional Owners, Orange Local Aboriginal Land Council, and other government and non-government organisations
- Phone calls and visits to local properties within 5kms of the investigation area
- Six community drop-in sessions in Spring Hill, Millthorpe, Molong and Mullion Creek
- Stall at the Sustainability Expo
- Meetings with local businesses
- Email updates.

Thank you to everyone who was able to attend the community information drop-in sessions during August and September. Information is also available on our website, where you can register for updates and request a meeting.

The community consultation to date represents an opportunity for Iberdrola Australia to meet the community and share information and receive feedback. We will continue to attend local community events and host community meetings as the prospect develops.



Community information session at Millthorpe

What we've heard

Feedback from the engagement has shown us that you appreciate the opportunity to be involved.

Some of the key questions you had for us included:

- Location, number and size of the turbines
- Where the wind farm would connect into the electricity network
- How long the wind farms would be operational and the decommissioning process
- Managing bushfire risk.

Potential impacts to:

- Regular forest activities
- Local amenity, such as visual and noise
- Property value
- Local flora and fauna
- Cultural Heritage value of Mount Canobolas
- Traffic and transport.

As we continue to work through the planning stage, we will continue to provide you with information on each of these key issues.

Wind and environmental studies

We have completed the preliminary aviation, ecology and heritage studies needed to help us select the best location for the met mast and lidar. We expect to install the met mast and lidar before the end of 2024.

The met mast and lidar will provide us with a comprehensive understanding of wind conditions at the site and play an important role in helping us understand the feasibility of the project. They do this by monitoring wind and weather conditions at different heights above the ground. This data is vital for wind farm developers to accurately determine wind speeds, direction, and other weather conditions at sites, which can be challenging to predict. Wind data sets, recorded over a set period, are essential for projects to reliably estimate the expected energy output.

Next Steps

Over the coming months we will:

- Install the first met mast and lidar
- Continue engaging with the community, First Nations, Orange Local Aboriginal Land Council, government agencies and key local organisations
- Refine the design of the project to avoid or minimise the impacts of the project and integrate the findings following any assessments and our engagement to date
- Continue working on the Scoping Report.

Community Sponsorship Fund

Iberdrola Australia is committed to ongoing community consultation and engagement to tailor sponsorship initiatives to the local needs and values of the communities and environments in which we operate.

Subject to feasibility assessments and a robust planning approval process, the following benefits will support the local community and surrounding regions:

- Neighbour benefit sharing
- Community benefit fund
- Environment benefit fund
- Community enhancement fund.

Applications for the first round of early community sponsorships and grants will be advertised soon, this will include information on how to apply. Grant amounts of \$1,000 to \$5,000 will be available for local groups, clubs, schools and organisations in neighbouring suburbs.

Our KPMG audited 2023 Sustainability Report is available on our website presenting our sustainability initiatives and community engagement in regional Australia.



Aerial view of Canobolas State Forest, facing north, view of Cadiangullong Road.

The Planning process

We are preparing a Scoping Report, which sets out the matters to be investigated in the environmental assessment and outlines the engagement to be carried out. It also includes the outcomes of any initial studies and engagement.

We expect the Scoping Report to be published on the NSW Planning Portal in early 2025. More information about the planning process is available on the [NSW Planning Portal](#).



Community and stakeholder consultation.



Carry out environmental studies.



Complete wind monitoring.



Design the project - in consultation with community.



Negotiate grid connection.



Seek NSW Government planning approval.

Indicative Timeline

1. Renewable Energy Proposals Invited

Forestry Corporation reviews proposals to develop renewable energy projects on State Forest softwood pine plantations.

2. Investigation Permits Issued

Forestry Corporation issues access and investigation permits to successful renewable energy companies, including Iberdrola Australia.

3. Community Engagement and Investigations Start

Iberdrola Australia engages with local communities and stakeholder and commences feasibility investigations.

WE ARE HERE

4. Development Approval Process Commences (if feasible)

If deemed feasible, Iberdrola Australia submits the proposal to the Department of Planning, Housing and Industry (DPHI) for assessment.

5. Public Exhibition

Iberdrola Australia's proposal is displayed for formal public feedback as part of the development application process.

6. State Government Assesses Projects

If approved by DPHI, Iberdrola Australia will be issued a construction and operations permit by the Forestry Corporation.

7. Wind Farm Construction

Construction takes place and the project is commissioned.

8. Wind Farm Operation

Iberdrola Australia to operate the wind farm.

9. Wind Farm Decommissioning or Re-Powering

INVESTIGATION PERMIT (4-6 YEARS)

ONGOING COMMUNITY AND STAKEHOLDER ENGAGEMENT

CONSTRUCTION & OPERATIONS PERMIT (35+ YEARS)

Our Commitment to Our Communities

Significant **economic investment** across the region.

Powering up to **106,000** homes.

Scholarships and traineeships.

Use of **local materials, products and services** from locally based suppliers where possible, including retail, transport and hospitality.

Sponsorship of **First Nations** and other **local community initiatives**.

Local **biodiversity enhancement** initiatives.

Establishment of a **Community Benefit Fund**.

Tell us what you think

Please scan the QR code or follow the link below to access our survey to provide your feedback on the Prospect.

<https://www.research.net/r/FMCWFSA>



About Us

Iberdrola has over 20 years of experience of being a developer, owner and operator of renewable energy assets in Australia. Our portfolio includes 1.7 gigawatts (GW) of renewable energy generation with additional firming assets. **Through our partnership with Forestry Corporation of NSW, Iberdrola Australia continues to strive for a brighter future.**

For further details on Forestry Corporation's renewable energy projects, visit their website via the link below.

Mailing list

Sign up to our project mailing list and stay informed with updates and upcoming consultation opportunities. Scan the QR code or visit our website via the link below.



Website Details



Visit Iberdrola Australia Project Website: <https://www.iberdrola.com.au/our-assets/development-assets>



Visit the Forestry Corporation Website: <https://www.forestrycorporation.com.au/sustainability/renewable-energy>

Contact Details

If you have any questions, initial feedback, local knowledge or suggestions, please reach out via the contact details below.



Email Us: fourmilecreekwindfarm@iberdrola.com.au



Call us on 0417 543 502 (and speak to Grace, during work hours) or 1800 917 372 (24h, free within Australia)