

# Gin Gin Battery



Factsheet | December 2024

The proposed Gin Gin Battery project is located on Bailai, Gurang, Gooreng Gooreng, Taribelang Bunda people's country, within the Bundaberg Regional Council and approximately 20km northwest on the Bruce Highway from the Gin Gin township.

The project lodged its Material Change of Use (MCU) and Reconfiguration of a Lot (ROL) Application with Bundaberg Regional Council in June 2024.

If approved, the Battery, once operational will have a capacity of up to 500MW and will connect to the Gin Gin Substation.



Design the project - in consultation with community.



Up to 500MW installed capacity.



Powering up to 65,000 homes.



2-4 hours capacity storage.



Grid connection through Gin Gin Substation.

## Next Steps



Continue community and stakeholder consultation.



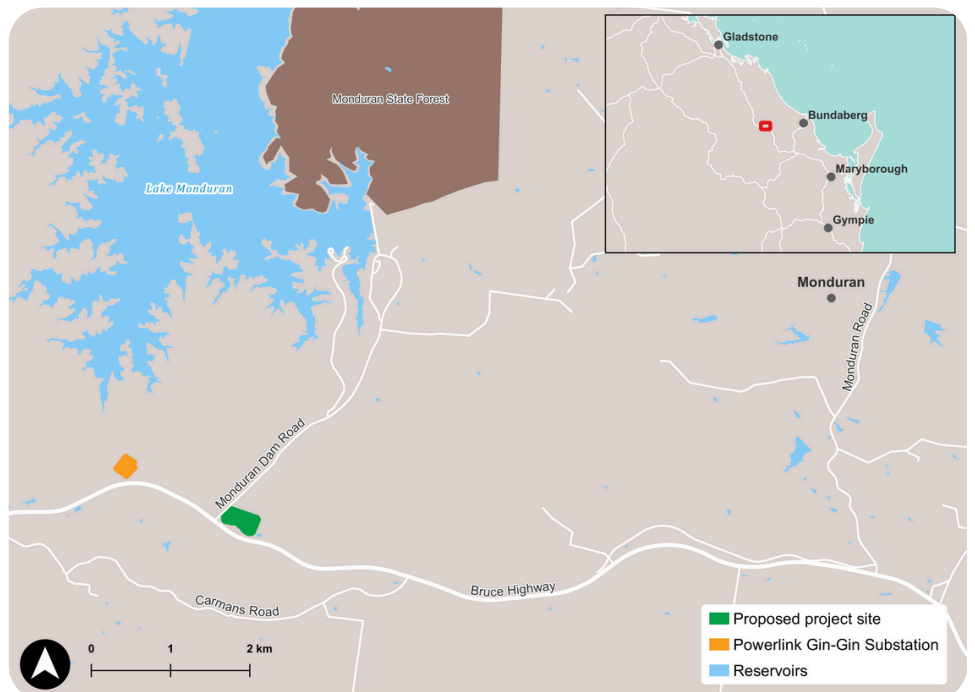
Continue environmental studies.



Design project to minimise environmental, cultural heritage and community impact.



Obtain State and Commonwealth development approvals.



## Our Commitment to Our Communities



significant economic investment across the Bundaberg region



employment opportunities



use of local services and products where possible (including, transport, restaurants and accommodation)



sponsorship of local community projects and initiatives



establishment of community benefit fund

## Stay Up-To-Date

If you would like to be kept informed about project developments or upcoming community engagement sessions, please sign up for our project mailing list, which is available via the QR code.



### Indicative Timeline

#### 1. Site Identification and Feasibility Studies

Iberdrola identified the site and undertook desktop feasibility.

#### 2. Community Engagement and Planning approval Preparation

Iberdrola consulted with the host landowner, key stakeholders, First Nations and council. Planning application and relevant technical studies is prepared, incorporating any feedback.

#### 3. Public Notification

The planning application is on public exhibition and is open for comment.

**WE ARE HERE**

#### 4. Planning Approval Granted

The Bundaberg Regional Council assess the project and awards approval if the project meets the relevant planning provisions.

#### 5. Pre-construction

Iberdrola Australia will undertake further design, contracting and procurement.

#### 6. BESS Construction

Construction takes place and the project is commissioned.

#### 7. Operations

Iberdrola Australia operates the BESS.

#### 8. Decommissioning or Re-Powering

## About Iberdrola Australia

We are a long-term developer, owner, and operator of renewable energy generators and storage projects. We are committed to being the leading green energy provider for Australian businesses.

Over the past 20+ years, our team at Iberdrola Australia has worked alongside the communities that host our projects and developed longstanding relationships. We are committed to ensuring **meaningful, ongoing, and positive consultation** and **benefit-sharing** with our neighbouring communities.

We are backed by the Iberdrola Group, a global leader in renewable energy. This means we have the support to successfully deliver projects of any size.

## Contact Us

If you have any questions about the project, feedback or would like to share your local knowledge we are available via the contact information below.



Visit our website:  
<https://www.iberdrola.com.au/our-assets>



Email us:  
[ginginbattery@iberdrola.com.au](mailto:ginginbattery@iberdrola.com.au)



Call us on:  
1800 917 372